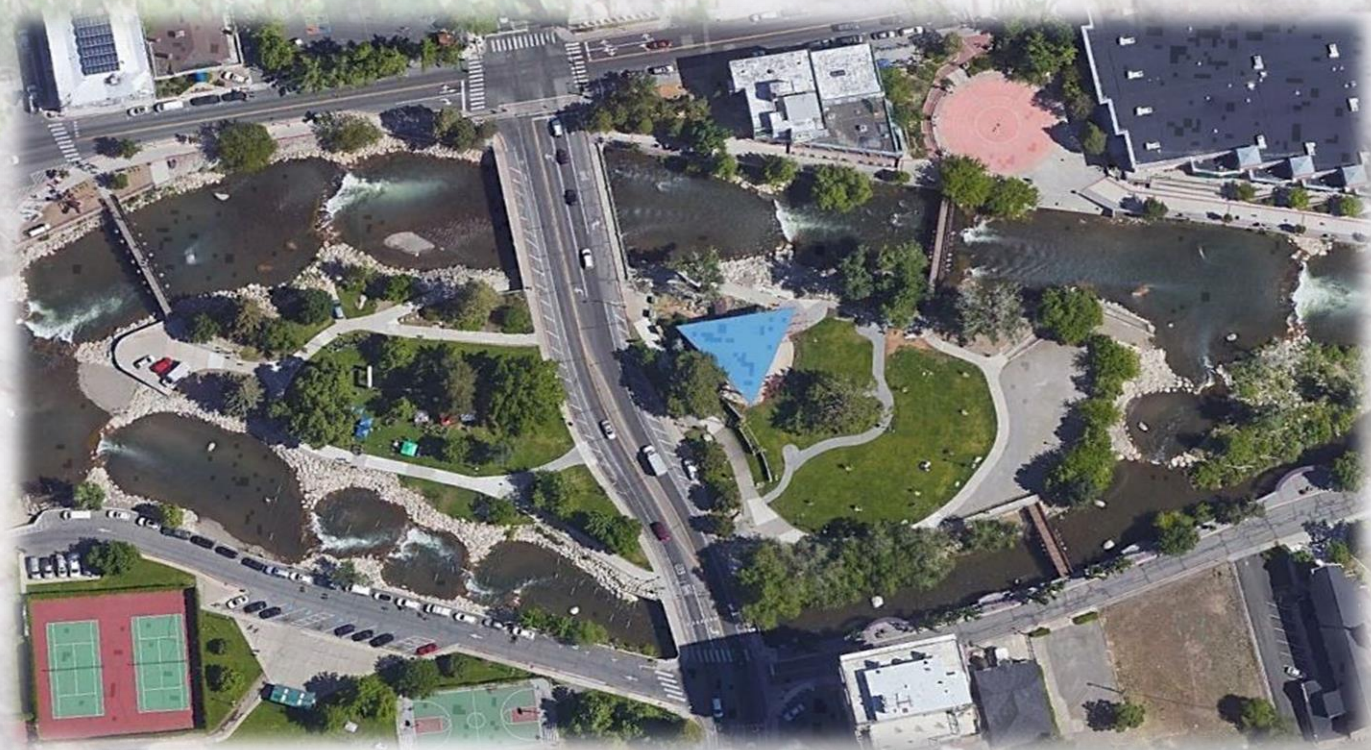


# Design and Environmental Study For



## ARLINGTON AVENUE BRIDGES REPLACEMENT

Aesthetics Working Group Meeting #5 | September 27, 2022

# Agenda



- ✓ Survey Results Review- Ended September 16, 2022
- ✓ Bridge Aesthetics and Lighting Recommendation
- ✓ Considerations
- ✓ Public Art
- ✓ 60 Percent Plans: January 2023



# Survey Results Aesthetics

## Bridge Railing Type -

	1
BR Option 1 – Concrete Bridge Rail/Parapet (Slide 6)	23.76% 91
BR Option 2 – Metal Vehicular Bridge Rail with Metal Pedestrian Fence (Slide 7)	46.81% 176
BR Option 3 – Concrete Bridge Rail with Metal Overlook Fence (Slide 8)	31.23% 119

## Pylon -

	1
Pylon Group A: Tall End Pylon	51.22% 189
Pylon Group B: Short End Pylon	24.52% 89
Pylon Group C: Mid-Size End Pylon	26.30% 96

# Survey Results Aesthetics



## Lighting

	1
L Option 1 - Post Top Light	47.73% 179
L Option 2 - Custom Column Light – (can only be used with bridge rail options 2 and 3)	53.24% 197

# Survey Results Aesthetics

Bridge Railing Type Metal- Tall End Pylon - Custom Column Lights -





# Survey Results Aesthetics

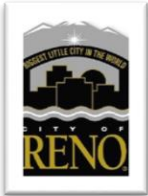
Recommendation for 60 Percent -



# Thank You for Participating!



[Barb.Santner@stantec.com](mailto:Barb.Santner@stantec.com)



*Building A Better Community  
Through Quality Transportation.*  
[rtcwashoe.com](http://rtcwashoe.com)



**Jacobs**



PK Electrical, Inc.

