

# Design and Environmental Study For Arlington Avenue Bridges Replacement



**Public Input Received About the Truckee River Whitewater Park**

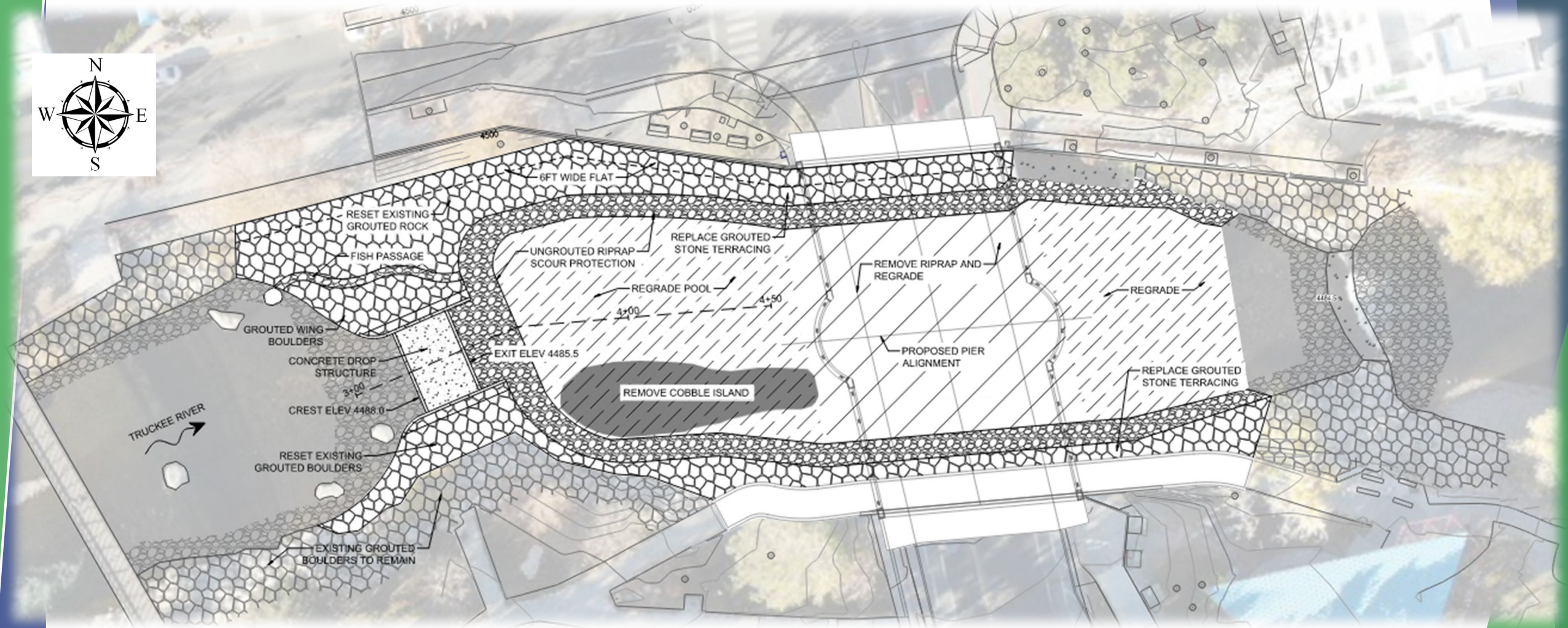
**Public Information Meeting #3 | June 2023**

# Summary of Comments

- ▶ Make sure whitewater park is functional and safe with new north bridge pier placement
- ▶ Don't use sharp rocks or riprap in the river
- ▶ Involve the original whitewater park designer
- ▶ Use this opportunity to improve and enhance the whitewater park
- ▶ Maintain recreational river access during construction
- ▶ Provide safe locations to exit the river during construction
- ▶ Use this opportunity to improve and enhance the whitewater park



# Mitigating Project Impacts

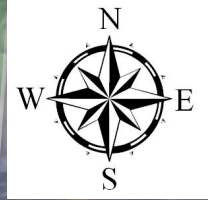


# Maintaining River Access

- ▶ River access will be maintained during the majority of construction period (two years)
- ▶ Access restricted to either the north or south channel from July to October (potentially through November)
- ▶ Safe take-out locations to be identified during development of river diversion plans
- ▶ Short duration river closures during safety-critical bridge construction activities over the river
- ▶ RTC will coordinate with the City of Reno and the whitewater community to develop communication protocols
- ▶ Contractor will install overhang forms and debris netting on bridges for over-water work



# River Access - North Bridge Construction



# River Access - South Bridge Construction



# Questions and Comments

Click here to take our survey: [Survey Link](#)

Use this link to:

- ▶ Submit questions or feedback
- ▶ Stay informed by joining the email list
- ▶ Tell us what construction information and updates you'd like to receive

Check the project website anytime to get the latest information at:

[www.ArlingtonBridges.com](http://www.ArlingtonBridges.com)

Email me with any questions, comments or concerns at:

[JTortelli@rtcwashoe.com](mailto:JTortelli@rtcwashoe.com)

# Thank You for Your Participation!



*Building A Better Community  
Through Quality Transportation.*  
[rtcwashoe.com](http://rtcwashoe.com)



**Jacobs**



PK Electrical, Inc.

