

Design and Environmental Study For Arlington Avenue Bridges Replacement



Final Design Details

Public Information Meeting #3 | June 2023

Design – Project Meetings / Design Input

- 1 - March 2022 Public Information Meeting #1 (Virtual) (164 Survey Participants)
- 1 - August 2022 Public Information Meeting #2 (Virtual & In-Person) (386 Survey Participants)
- 5 - Quarterly Agency Coordination Meetings
- 5 - Monthly Aesthetic Stakeholder Working Group Meetings (during 30%)
- 13 - Monthly Design Review & Utility Coordination Meetings
 - 2 - Coordination meetings with NV State Lands
- 10 - Hydraulic Modeling with City of Reno, Carson-Truckee Water Conservancy District, and the Truckee River Flood Management Authority
- 16 - Environmental/Permitting Focus
 - 1 - Presentation to Reno Access Advisory Committee
 - 1 - Presentation to Citizens Multimodal Advisory Committee
 - 3 - Constructability, Risk Assessment Meetings
 - 5 - Kayak Park Design, In Coordination with original Designer, Recreation Engineering and Planning



Project Constraints

- ▶ Environmental
 - ▶ Within US Army Corps of Engineers Civil Works Project
 - ▶ Park and Recreational Facility Impacts
 - ▶ Protection of Endangered Species

- ▶ Design
 - ▶ Bridge / Existing Floodwalls
 - ▶ Roadway Elevation
 - ▶ Nearby Intersections and Buildings

90% Design - Aesthetics

Overview of north and south bridges with chosen aesthetics



90% Design - Aesthetics

Overview of south bridge with chosen aesthetics



90% Design - Aesthetics

Overview of north bridge with chosen aesthetics



90% Design - Aesthetics

Park Level View of North Bridge and Pedestrian Path



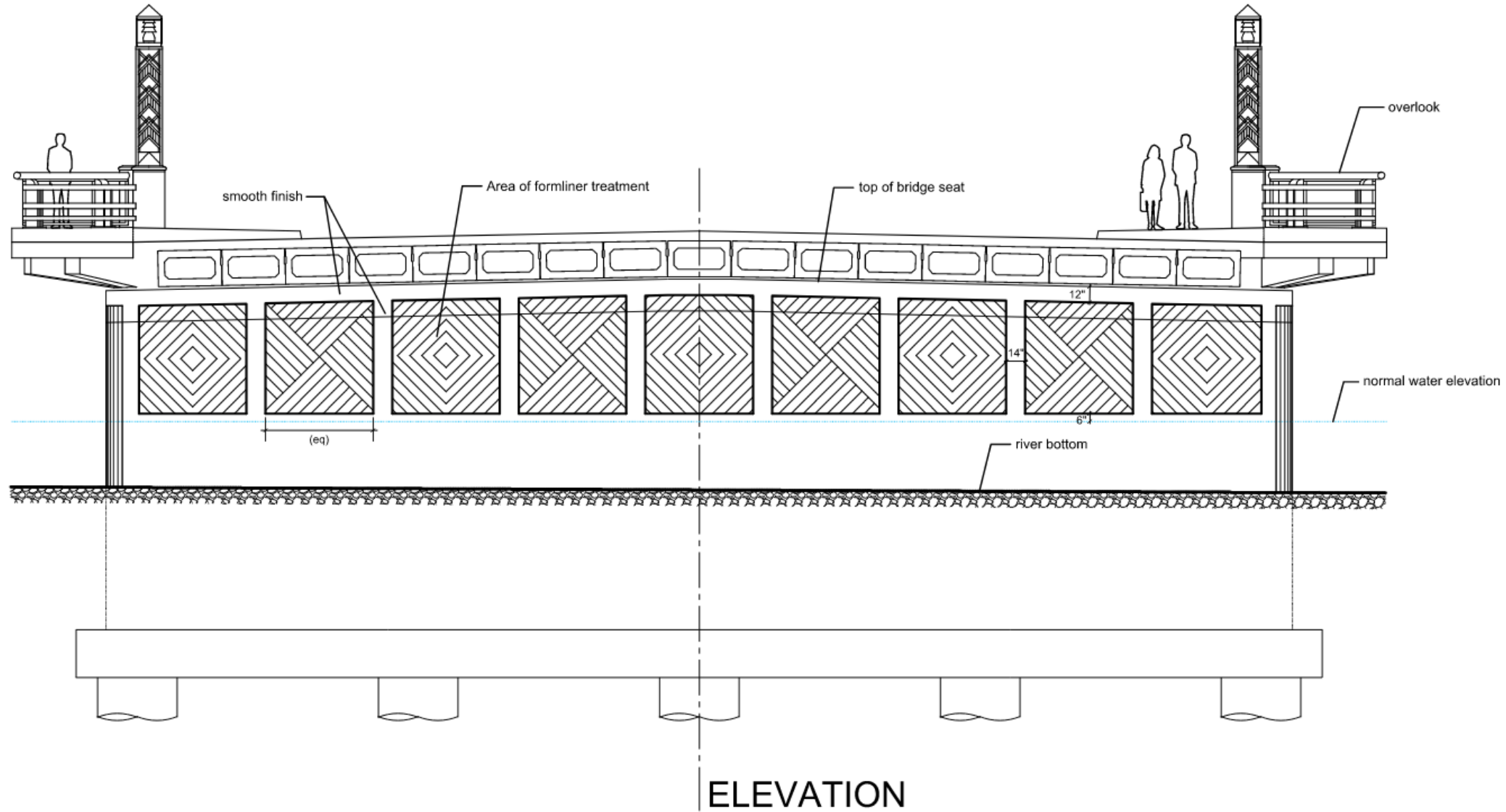
90% Design - Aesthetics

Preliminary Custom Light Column Aesthetics



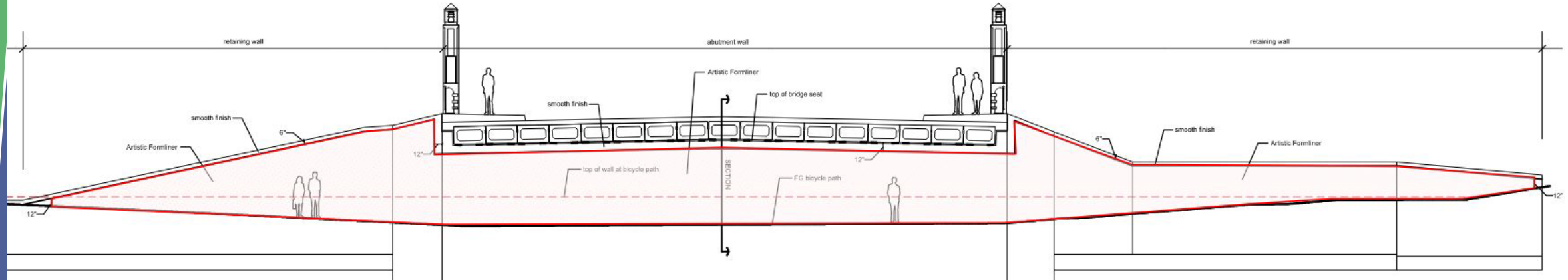
90% Design – Aesthetics Pattern

Concrete Pattern on North Bridge Center Pier

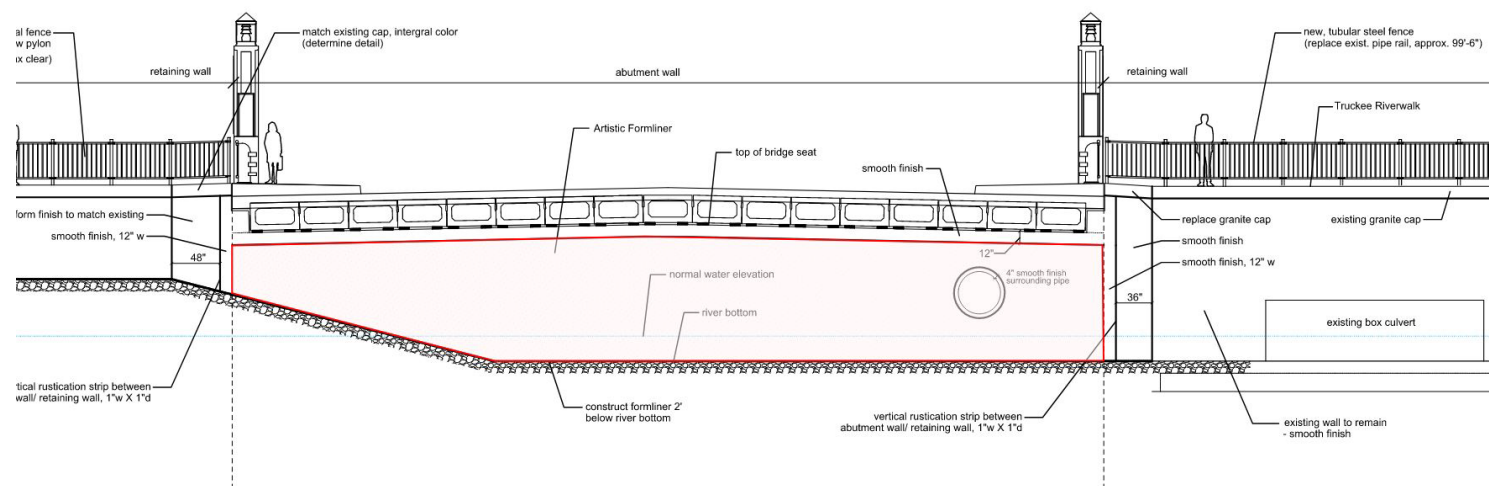


90% Design – Aesthetics Call for Artists

Pattern on North Bridge South Abutment Face

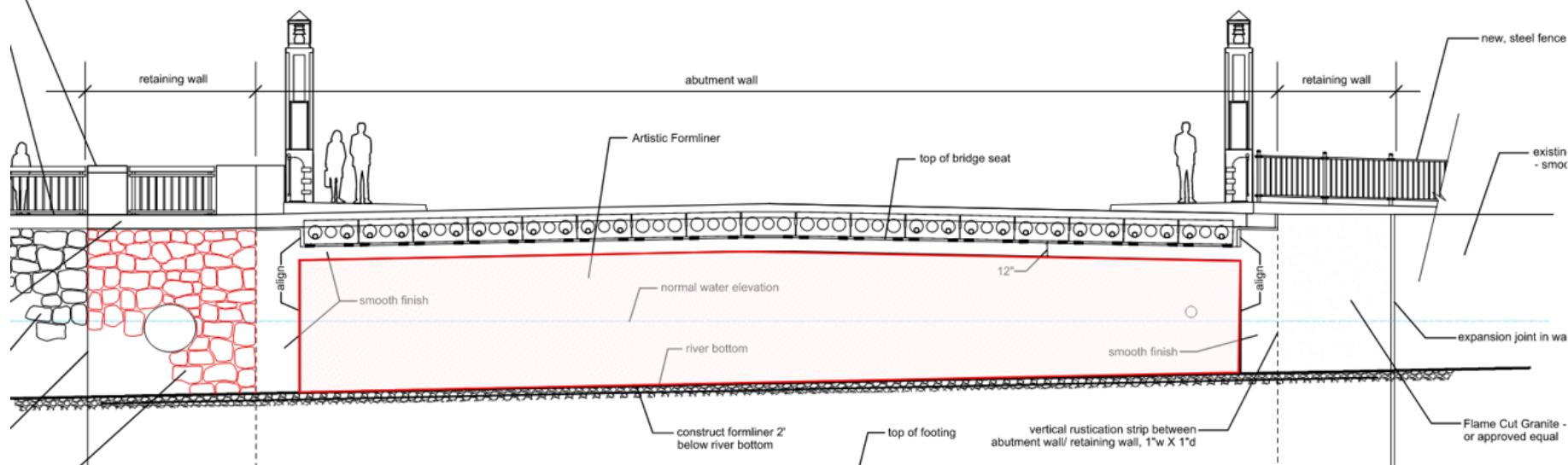


Pattern on North Bridge North Abutment Face

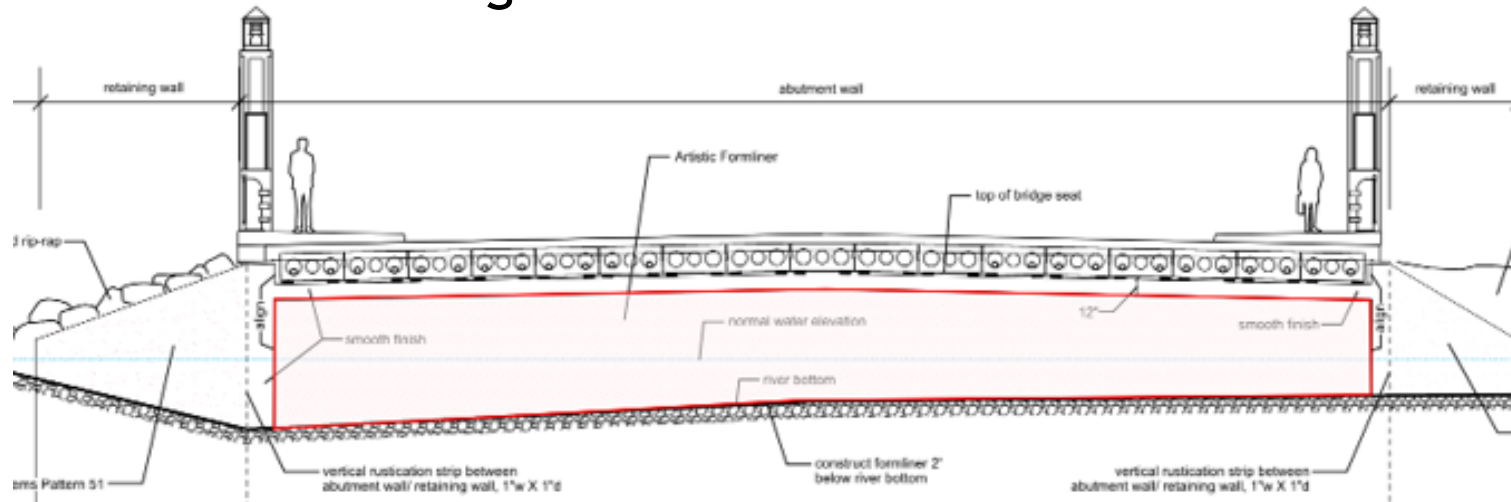


90% Design – Aesthetics Call for Artists

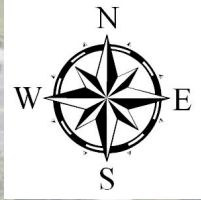
Pattern on South Bridge North Abutment Face



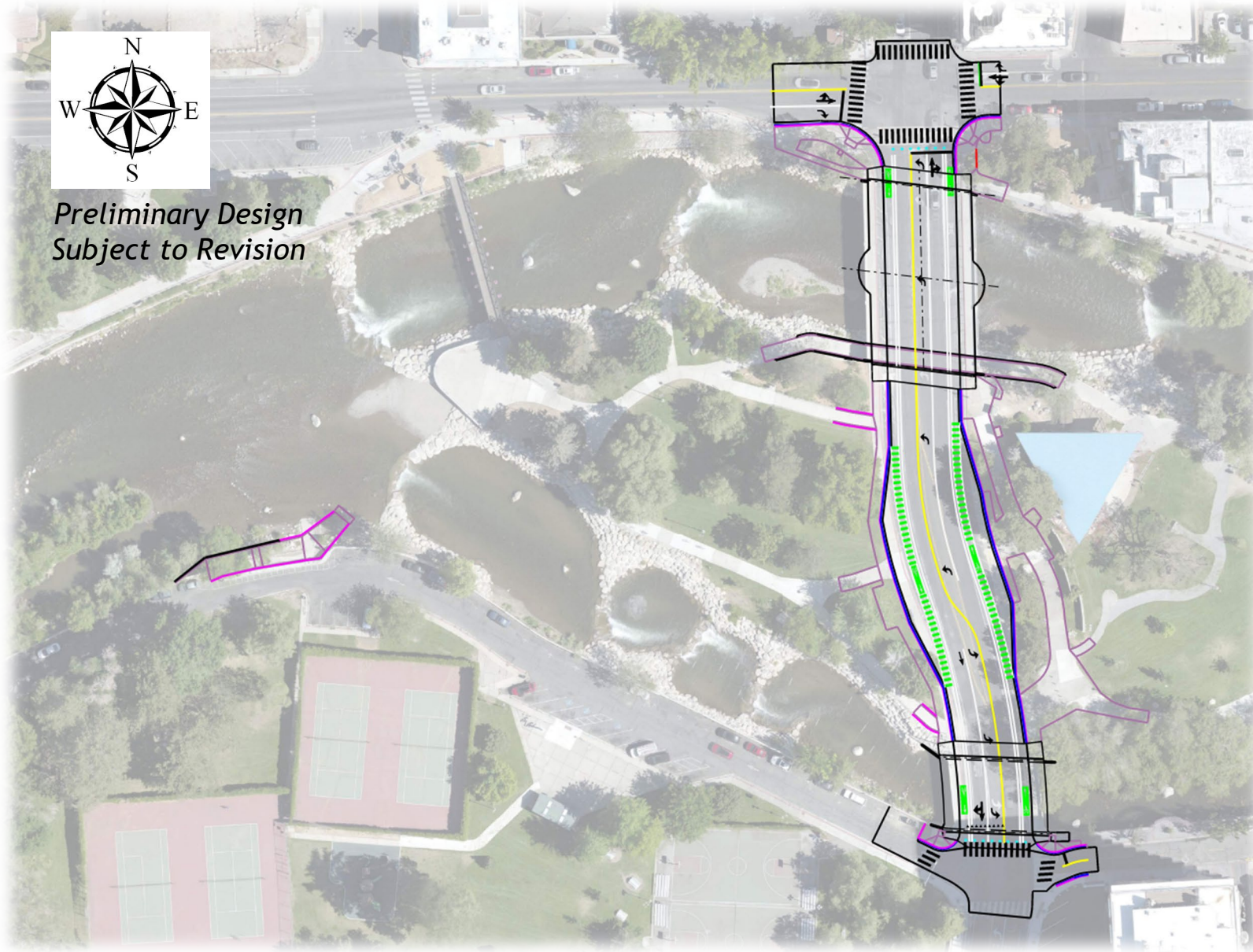
Pattern on South Bridge South Abutment Face



90% Design - Overview



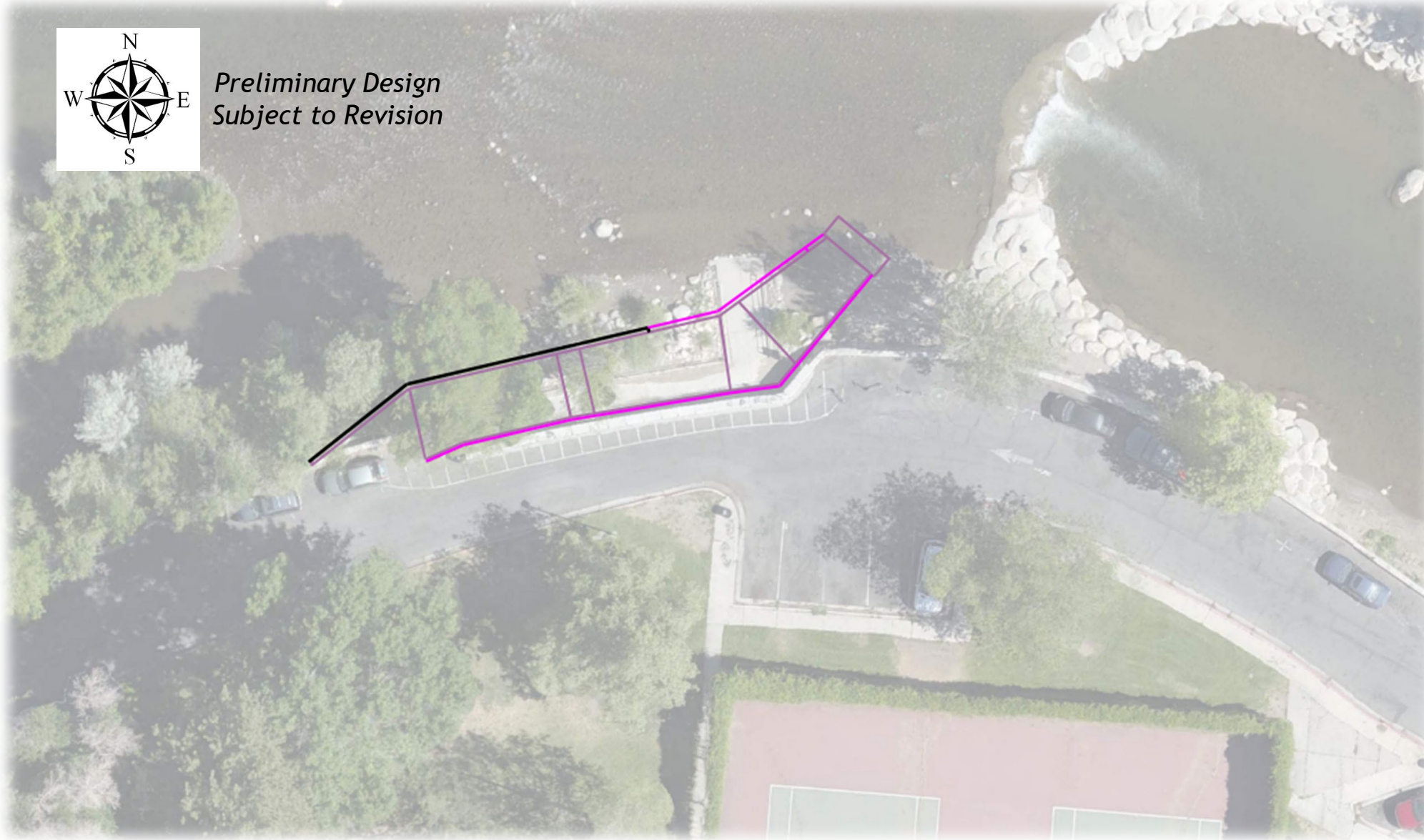
*Preliminary Design
Subject to Revision*



90% Design – Maintenance Access Ramp



*Preliminary Design
Subject to Revision*



Retaining Wall

Concrete

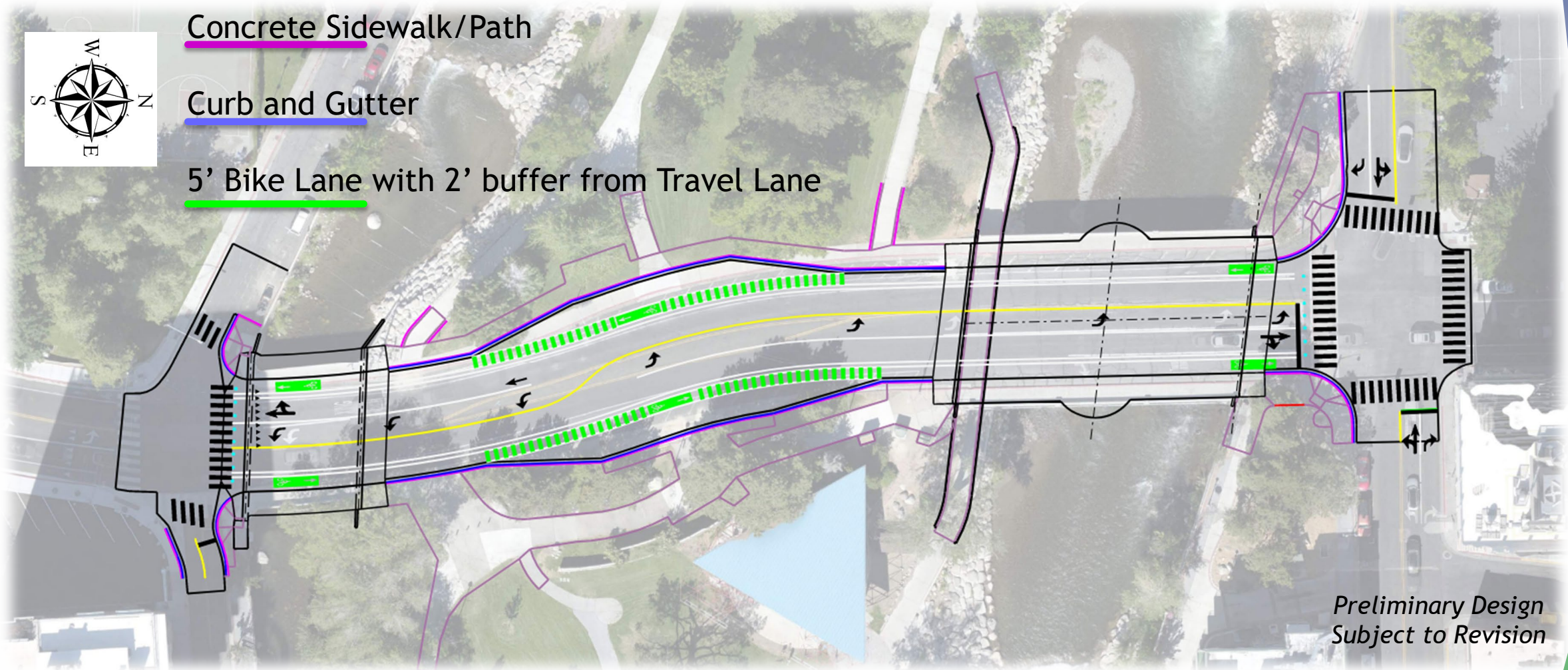
90% Design – Arlington Avenue

Retaining Wall / Bridge

Concrete Sidewalk/Path

Curb and Gutter

5' Bike Lane with 2' buffer from Travel Lane

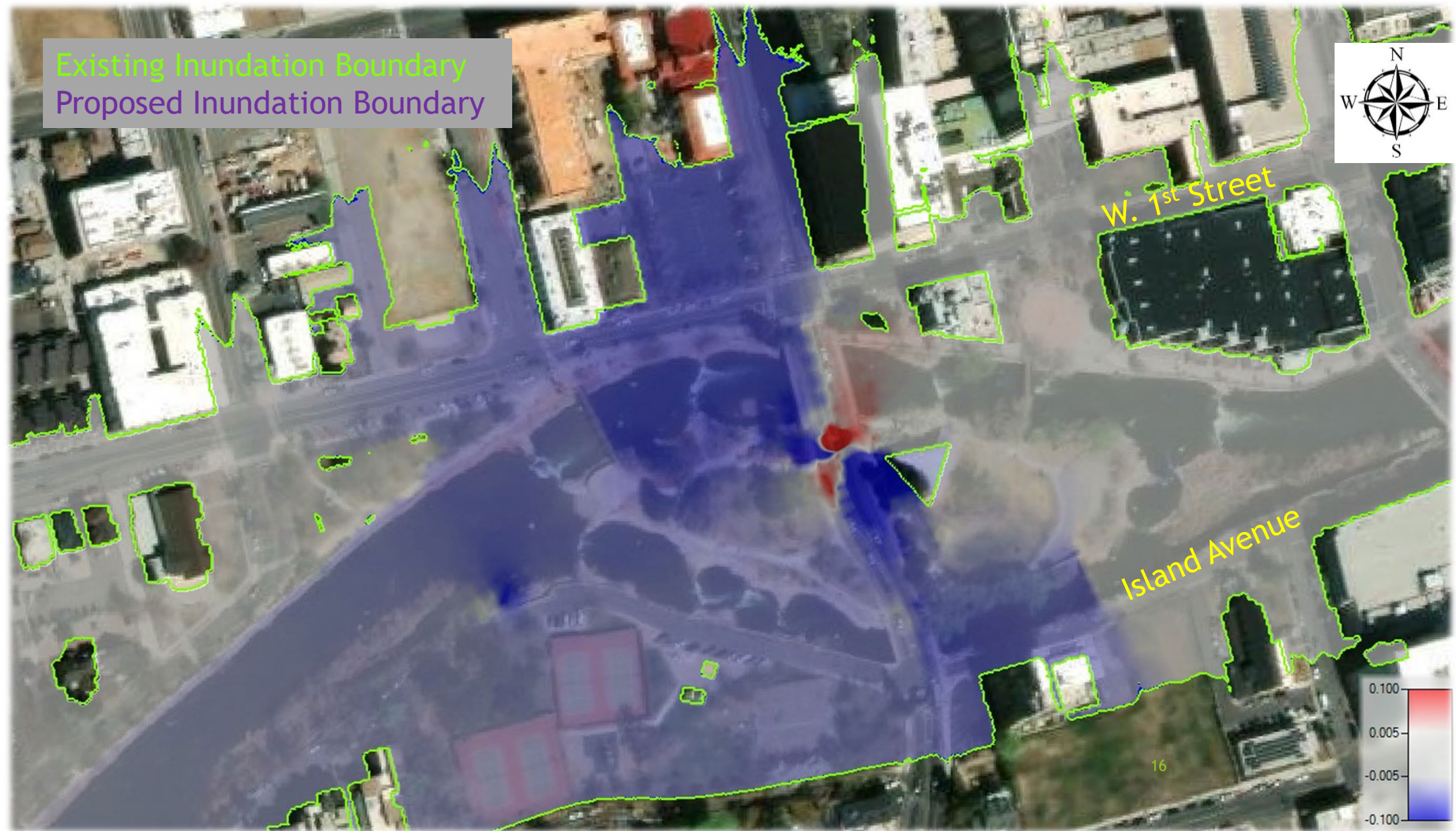


*Preliminary Design
Subject to Revision*

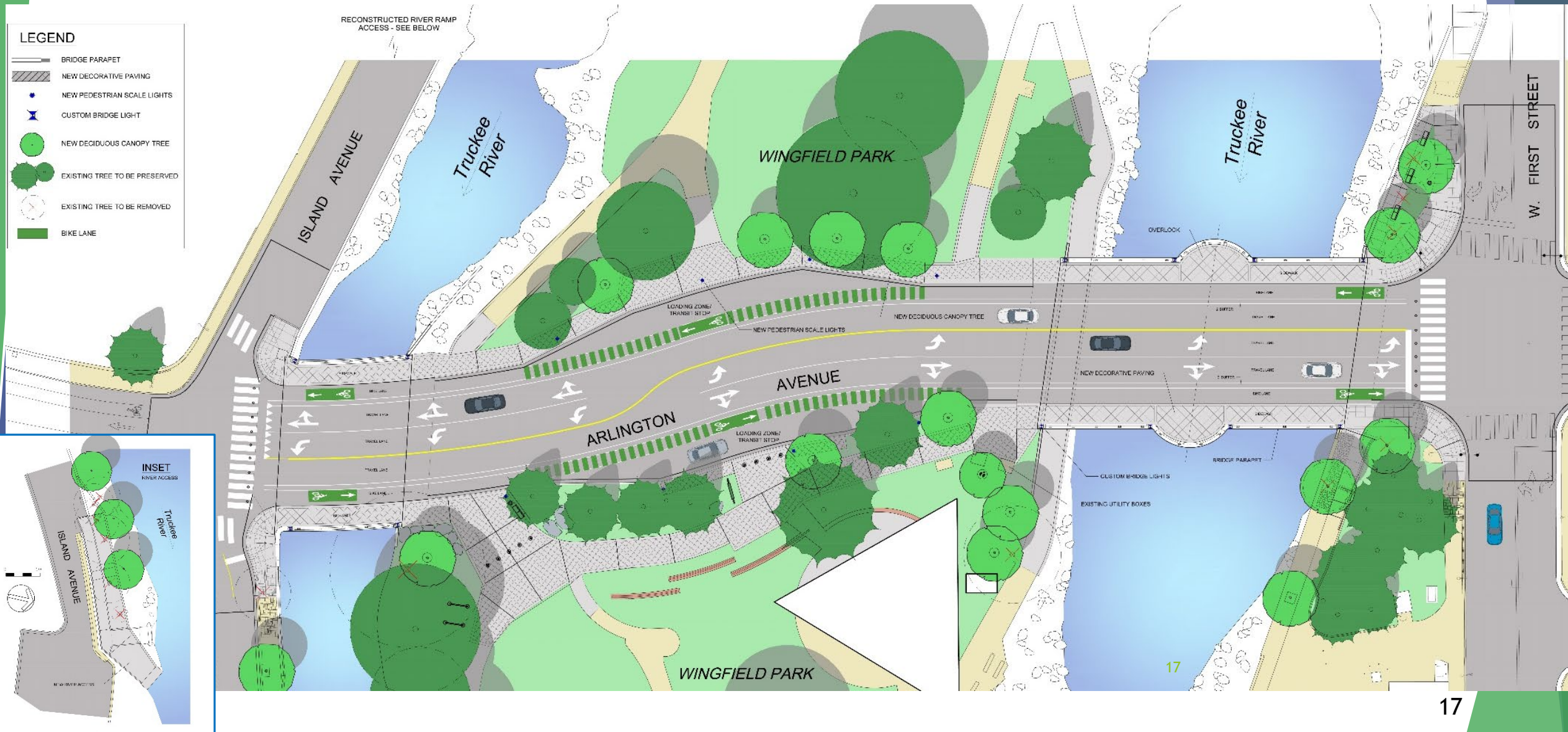
60% Design – 14,000 cfs Flow



60% Design –100 Year Storm



Streetscape Elements – Trees and Hardscape



Streetscape Elements - Lighting



Post-Top Light @ 14' Height



Continuous Under-Railing
Lighting



Up-Lighting along Path Under
North Bridge

Questions and Comments

Click here to take our survey: [Survey Link](#)

Use this link to:

- ▶ Submit questions or feedback
- ▶ Stay informed by joining the email list
- ▶ Tell us what construction information and updates you'd like to receive

Check the project website anytime to get the latest information at:

www.ArlingtonBridges.com

Email me with any questions, comments or concerns at:

JTortelli@rtcwashoe.com

Thank You for Your Participation!



*Building A Better Community
Through Quality Transportation.*
rtcwashoe.com



Jacobs



PK Electrical, Inc.

