

Design and Environmental Study For



ARLINGTON AVENUE BRIDGES REPLACEMENT

Design Review Committee | February 14, 2023

Agenda



- ✓ Review Existing Bridge Railings and Sidewalks in Surrounding Area Context
- ✓ Review Proposed Arlington Bridge and Pedestrian Fencing/Railing Materials, Colors, and Finishes
- ✓ Review Arlington Bridge Sidewalk Paving Patterns, Colors, and Finishes
- ✓ Tree Removals, New Landscaping
- ✓ Lighting

Bridge and Railing Materials, Colors, Finishes



Existing Bridges - Lake Street Bridge - 1900's

Existing Bridges - Center Street Bridge- Replaced in 1998

Existing Bridges - Virginia Street Bridge - Replaced in 2016

Existing Bridges - Sierra Street - 1900's - To Be Replaced in 20XX

Existing Bridges - Arlington Avenue - 1900's- To Be Replaced in 2025

Existing Conditions Inventory: Lake Street Bridge

RENO WELCOME SIGN

DECORATIVE RAILING

PEDESTRIAN ACCESS

DECORATIVE LIGHTING ON BRIDGE PILASTER



SITE PLAN



PERSPECTIVE LOOKING SOUTHEAST



LIGHTING



REMOVABLE METAL RAILING

Existing Conditions Inventory: South Center Street Bridge

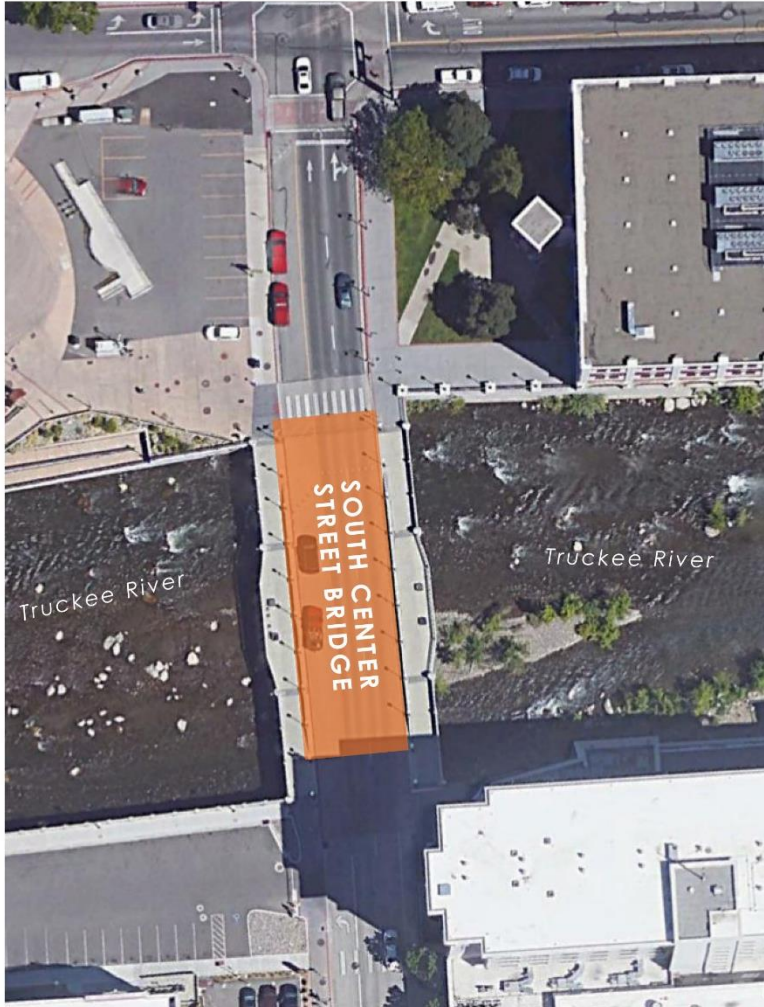
TRANSPARENT ART
DECO INSPIRED
DECORATIVE RAILING

VEHICULAR RATED
DECORATIVE
CONCRETE INTERIOR
GUARDRAIL

SCORED
PAVING

DECK WIDENED FOR
PEDESTRIAN USE

PEDESTRIAN
SCALE LIGHTS



SITE PLAN



VIEW LOOKING EAST



VIEW LOOKING WEST



LIGHTING



DECORATIVE RAILING AND GUARDRAIL

Existing Conditions Inventory: Virginia Street Bridge

TEXTURED
FLOOD
WALL

DECK WIDENED
FOR PEDESTRIAN
USE

CLEAR SPAN
BRIDGE

PEDESTRIAN
LIGHTING

ART DECO
BRIDGE
ACCENT

VEHICULAR
RATED
INTERIOR
GUARDRAIL

TRANSPARENT ART
DECO INSPIRED
PEDESTRIAN
RAILING



SITE PLAN



VIEW OF BRIDGE



RAILING



LIGHTING

SALVAGED/
REPLACED
LIGHT FROM
HISTORIC
BRIDGE



BRIDGE
ACCENT
LIGHTING

RAILING
ACCENT
LIGHTING

PEDESTRIAN
SCALED
LIGHTING



DECORATIVE PAVING



Existing Conditions Inventory: Sierra Street Bridge

SMOOTH TEXTURED
FLOOD WALL

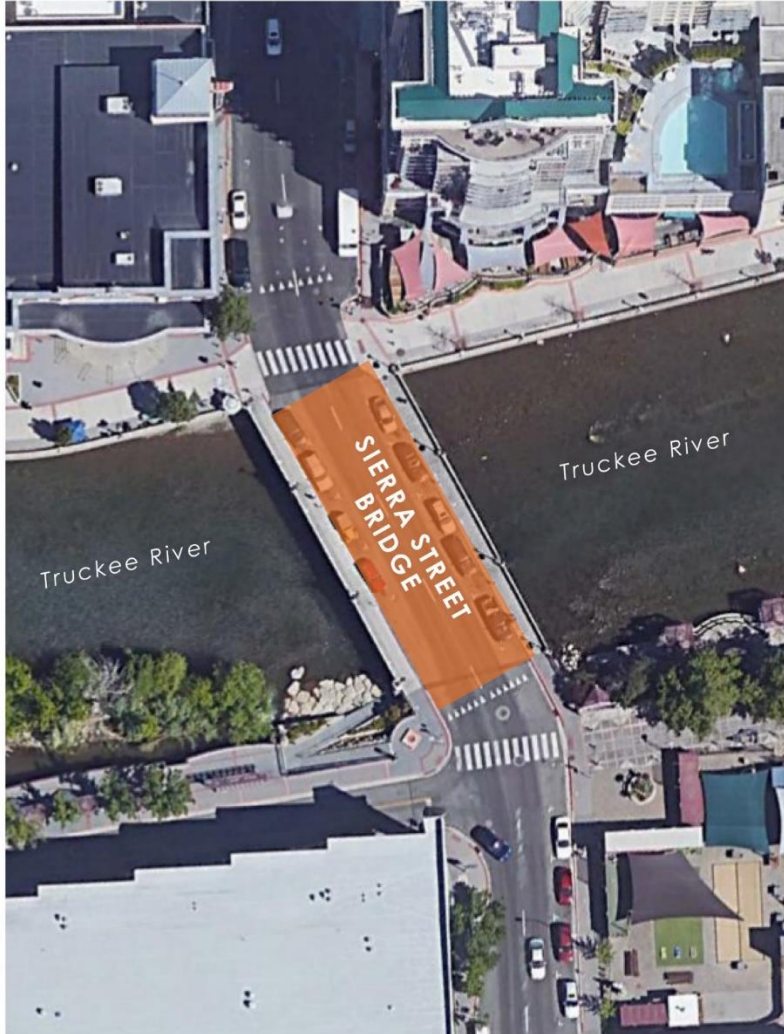
SMOOTH
TEXTURED
PIERS

DOUBLE PIER
BRIDGE

PEDESTRIAN
LIGHTING

PEDESTRIAN
ACCESS

DECORATIVE
BARRIER RAIL



SITE PLAN



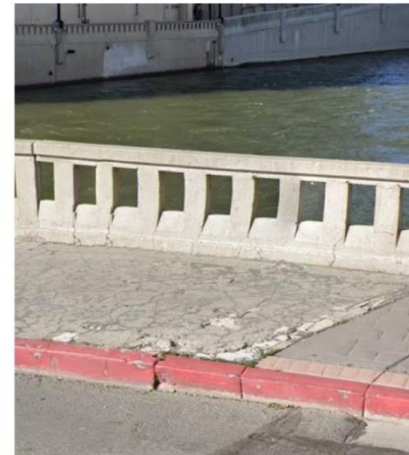
VIEW LOOKING WEST



VIEW LOOKING NORTH



LIGHTING



SIDEWALK



OPEN DECORATIVE CONCRETE RAILING



Existing Conditions Inventory: Arlington Avenue Bridges



SITE PLAN

ROCKERY FLOOD WALL

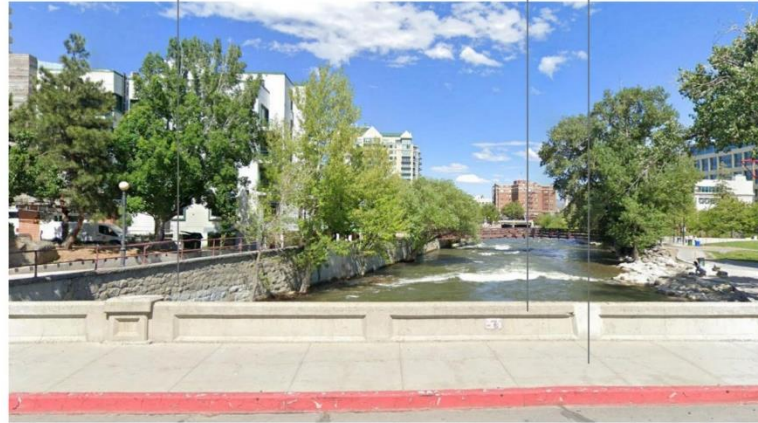
SOLID CONCRETE BARRIER RAIL

PEDESTRIAN ACCESS

RIP RAP

GIRDER

DOUBLE PIER BRIDGE



NORTHERN BRIDGE SECTION, LOOKING EAST



VIEW OF NORTHERN BRIDGE

ADJACENT PARK

ADJACENT RIVERWALK

SOLID CONCRETE BARRIER RAIL

CLEAR SPAN BRIDGE

PEDESTRIAN RAILING



SOUTHERN BRIDGE SECTION, LOOKING EAST



VIEW OF SOUTHERN BRIDGE

Existing Conditions Inventory: Riverwalk



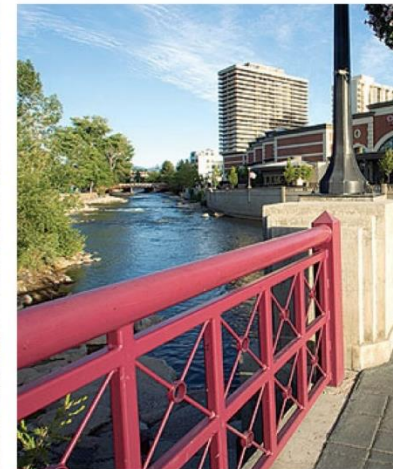
SITE PLAN



PERSPECTIVE



ARCHITECTURAL FEATURES



RAILING



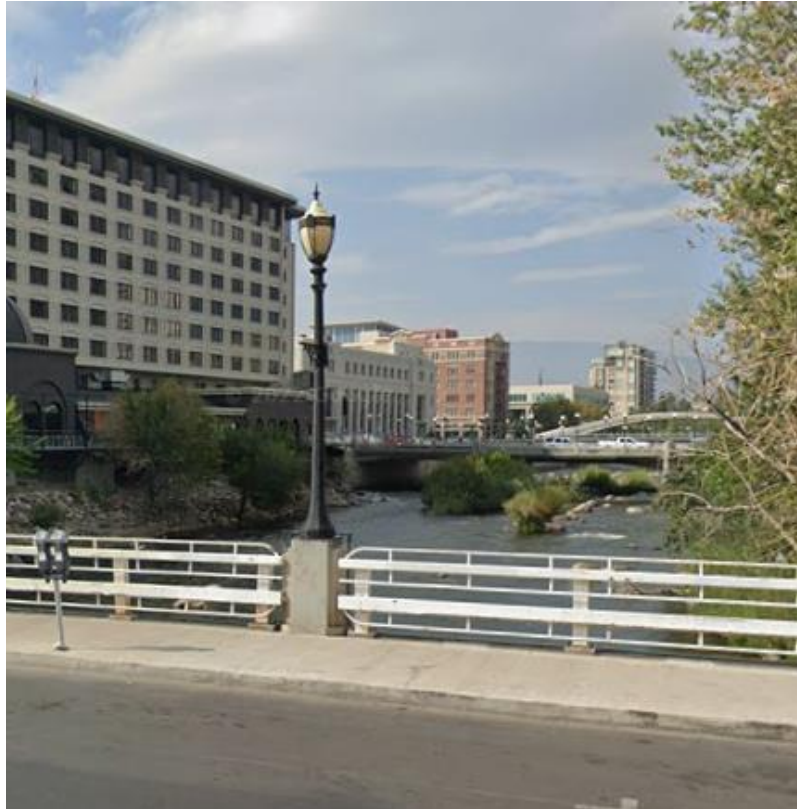
PEDESTRIAN BRIDGES

Bridge and Railing Materials, Colors, Finishes

Existing Bridges - Lake Street Bridge- Original 1900's

Concrete - Natural Color

Pedestrian Fencing - Painted Steel-
White, Removable



Bridge and Railing Materials, Colors, Finishes

Existing Bridges - Center Street Bridge- Replaced in 1998

Vehicular Railing - Natural Concrete, No Coatings

Pedestrian Fencing On Bridge - Aluminum

Pylons and Arch - Natural Concrete, No Coatings



Bridge and Railing Materials, Colors, Finishes

Existing Bridges - Virginia Street Bridge - Replaced in 2016

Vehicular Railing - Galvanized Steel

Pedestrian Fencing On Bridge -

- Powder Coated Gray Arched Arches, Stainless Steel Top Tube

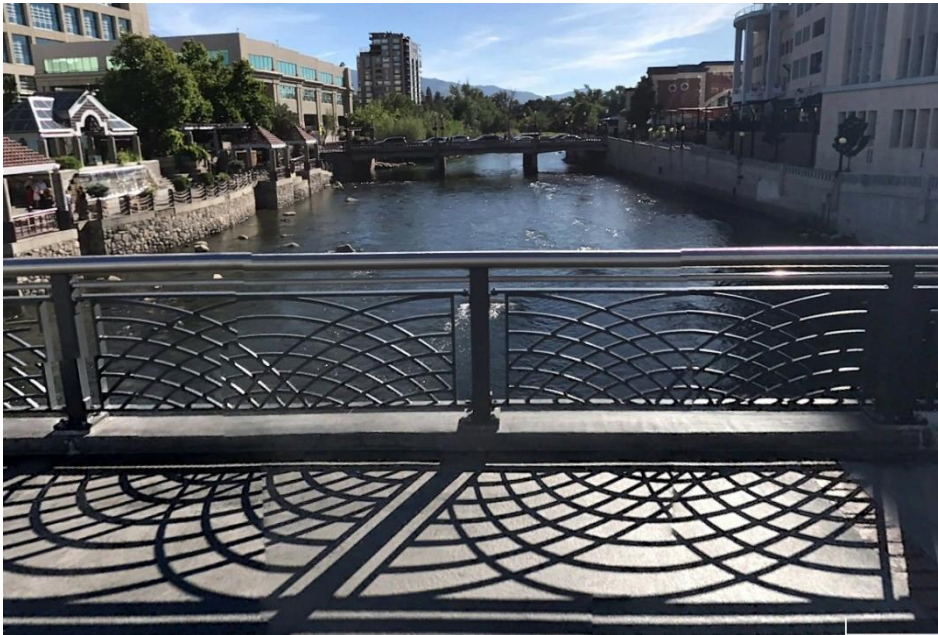
Pedestrian Fencing Off Bridge

- Powder Coated Gray Arches and Top Tube

Pylons and Arch - Natural Concrete with Anti-Graffiti Coating



Off Bridge
Pedestrian
Fence and Rail



Bridge Pedestrian Fence and Rail



Vehicular Rail

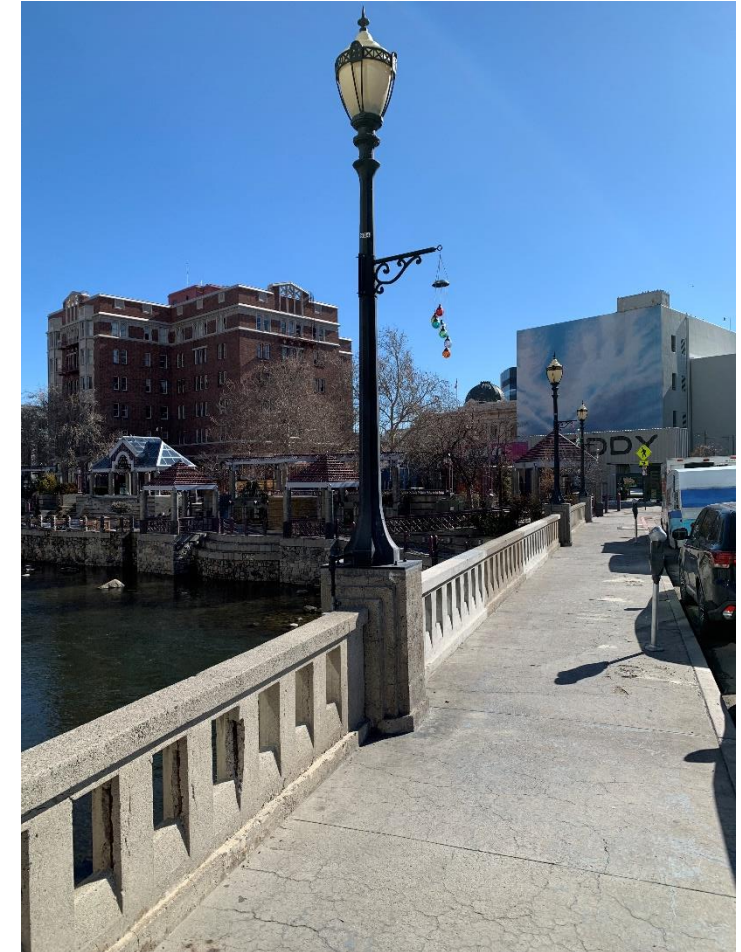


Bridge and Railing Materials, Colors, Finishes

Existing Bridges - Sierra Street - Original 1900's - To Be Replaced in 20XX

Pedestrian/Vehicular Railing - Natural

Concrete, No Coatings



Existing Sierra Street Bridge Concrete Parapet

Existing Conditions Inventory: Arlington Avenue Bridges



NORTHERN BRIDGE SECTION, LOOKING WEST



SOUTHERN BRIDGE SECTION, LOOKING WEST



VIEW OF KAYAK PARK



VIEW OF WILDLIFE

Bridge and Railing Materials, Colors, Finishes

Existing Bridges - Arlington Avenue - Original 1900's- To Be Replaced in 2025

Pedestrian/Vehicular Railing - Natural Concrete, No Coatings



Arlington Avenue - North Bridge Concrete Parapet



Arlington Avenue - South Bridge Concrete Parapet

Bridge and Railing Materials, Colors, Finishes

Arlington Avenue - Proposed

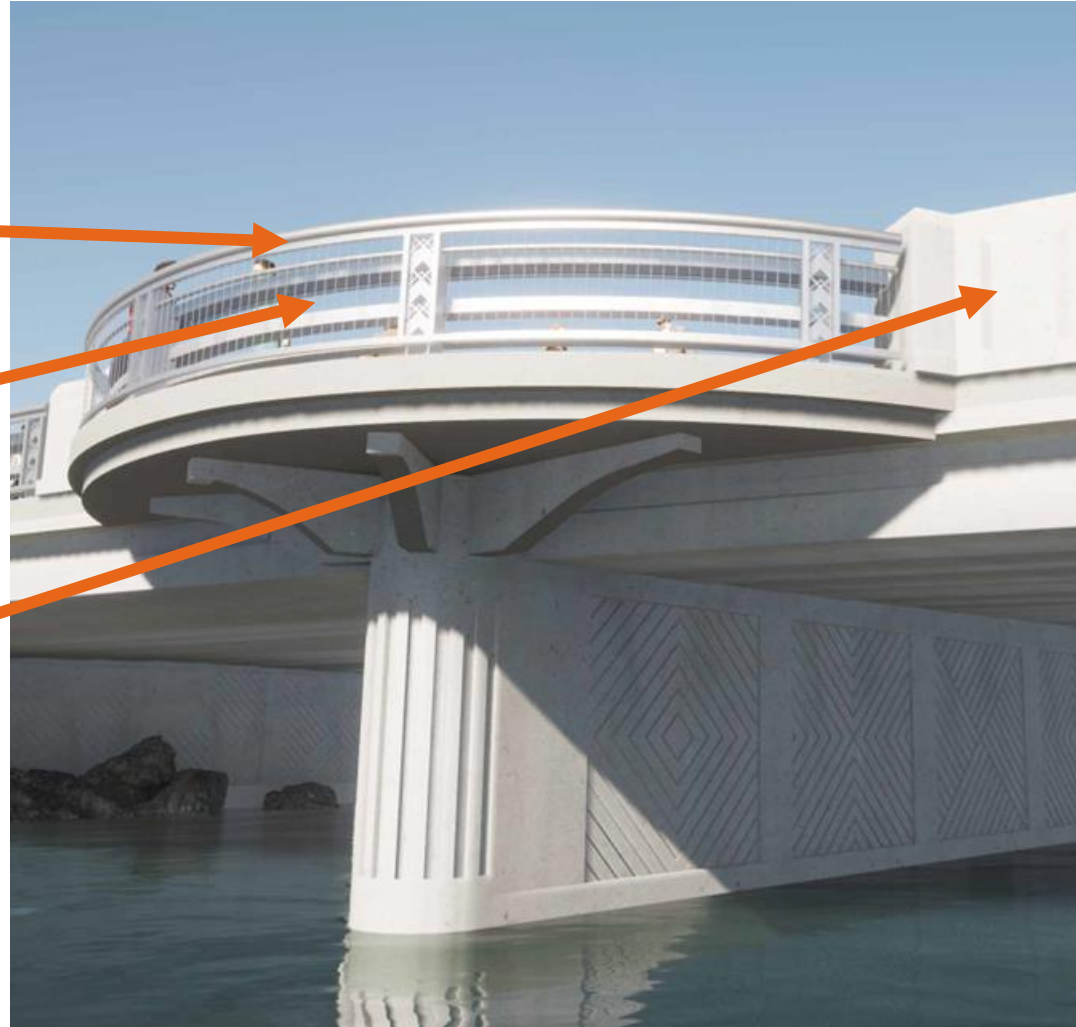
Concrete - Natural Color, Anti-Graffiti Coating

Pedestrian Fencing - Combination of Galvanized Fencing and Stainless Top Tube

Top Railing Tube -
Stainless Steel

Pedestrian Fence -
Galvanized, Stainless
Accents

Concrete - Natural Color,
Anti-Graffiti Coating



Bridge and Railing Materials, Colors, Finishes

Arlington Avenue - Proposed

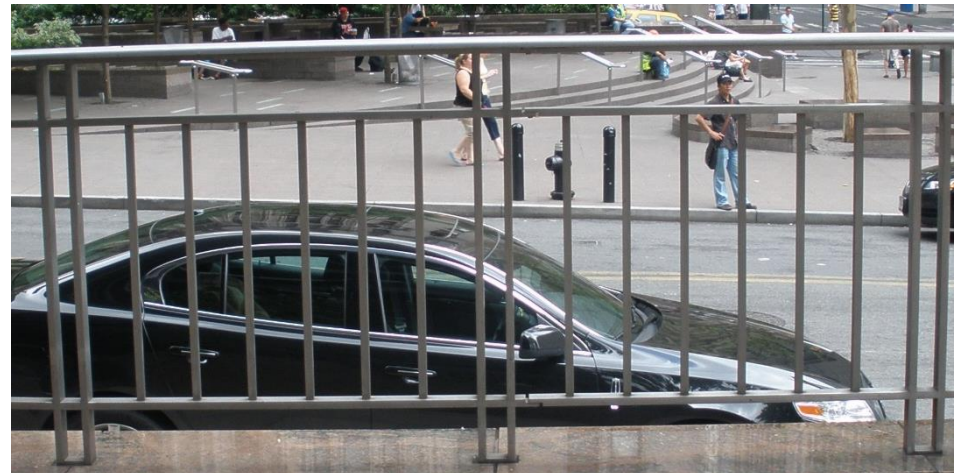
Stainless Steel Top Rail, Galvanized Steel Fence Posts & Pickets



Example Galvanized Posts & Pickets



Example Top Railing Tube - Stainless Steel



Example Galvanized Posts & Pickets w/ Stainless Steel Top Rail

Sidewalk Paving, Patterns, Colors, Finishes

Arlington Avenue Corners - Proposed

Arlington Avenue Sidewalks at Corners of
First Street and Island Avenue
-New Downtown Standard - Concrete
Integral Colored Gray, 2' - 4' Scoring
Pattern.



Truckee River Lane -

Replace in Kind - Concrete Natural
Color and Concrete Stamped Ashlar
Integral Colored Gray, Stamped
Brick Integral Color Red



Sidewalk Paving, Patterns, Colors, Finishes

Riverwalk - Proposed

Riverwalk

-Replace in Kind - Concrete Stamped Ashlar Integral Colored Gray, Stamped Brick Integral Color Red



Sidewalk Paving, Patterns, Colors, Finishes

Arlington Avenue - Proposed

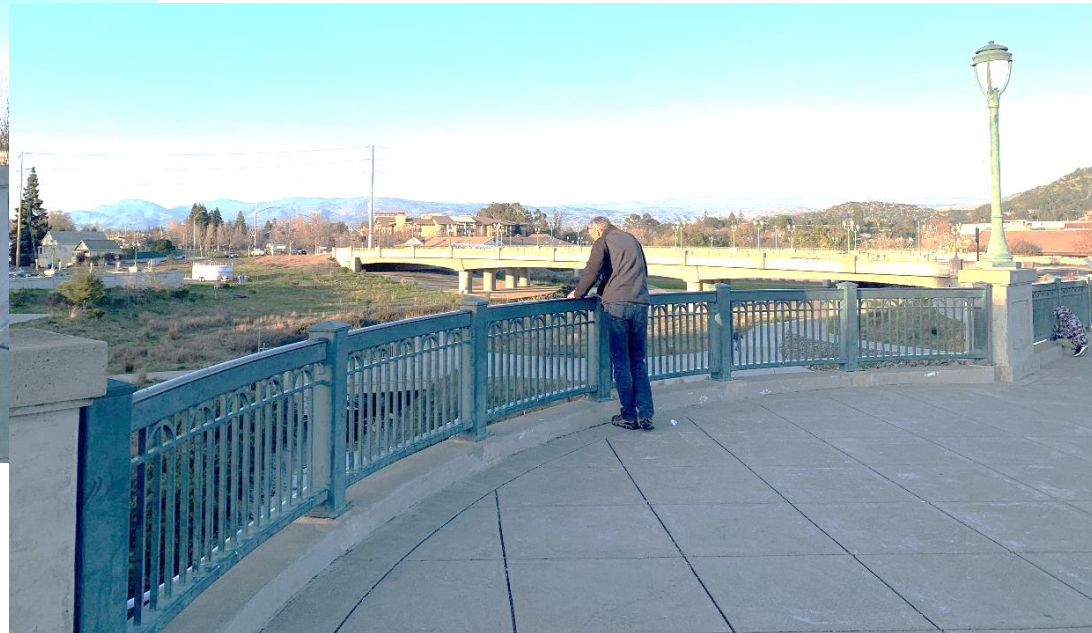
Sidewalks On Bridge and Through
Wingfield Park
-Natural Concrete - Diagonal 2' Scoring
Pattern, 1' Border Band on Both Sides



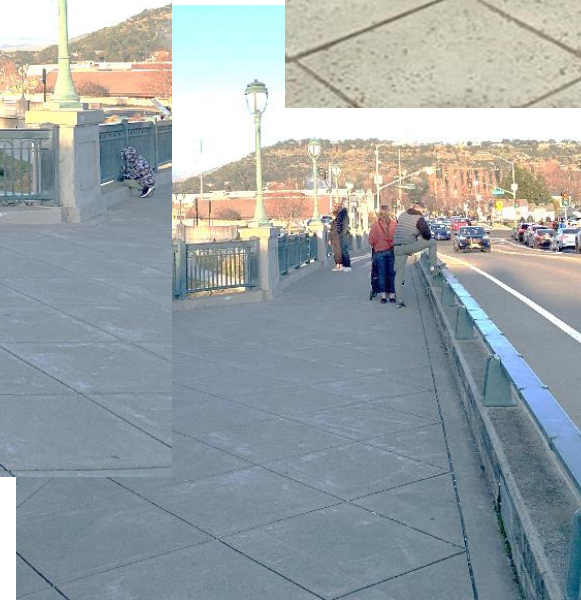
Sidewalk
Scoring 2' OC,
Diagonal



Example Pylon



Example Overlook with Diagonal Scoring

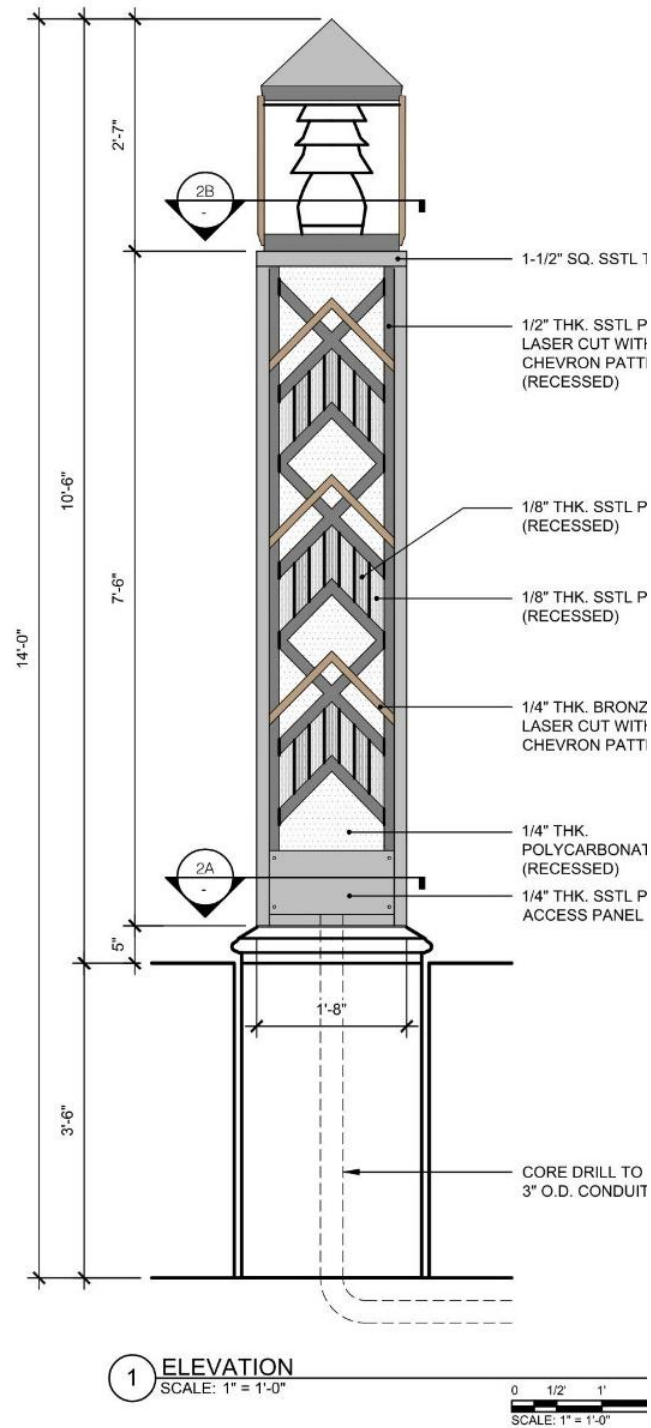


Lighting Colors, Finishes

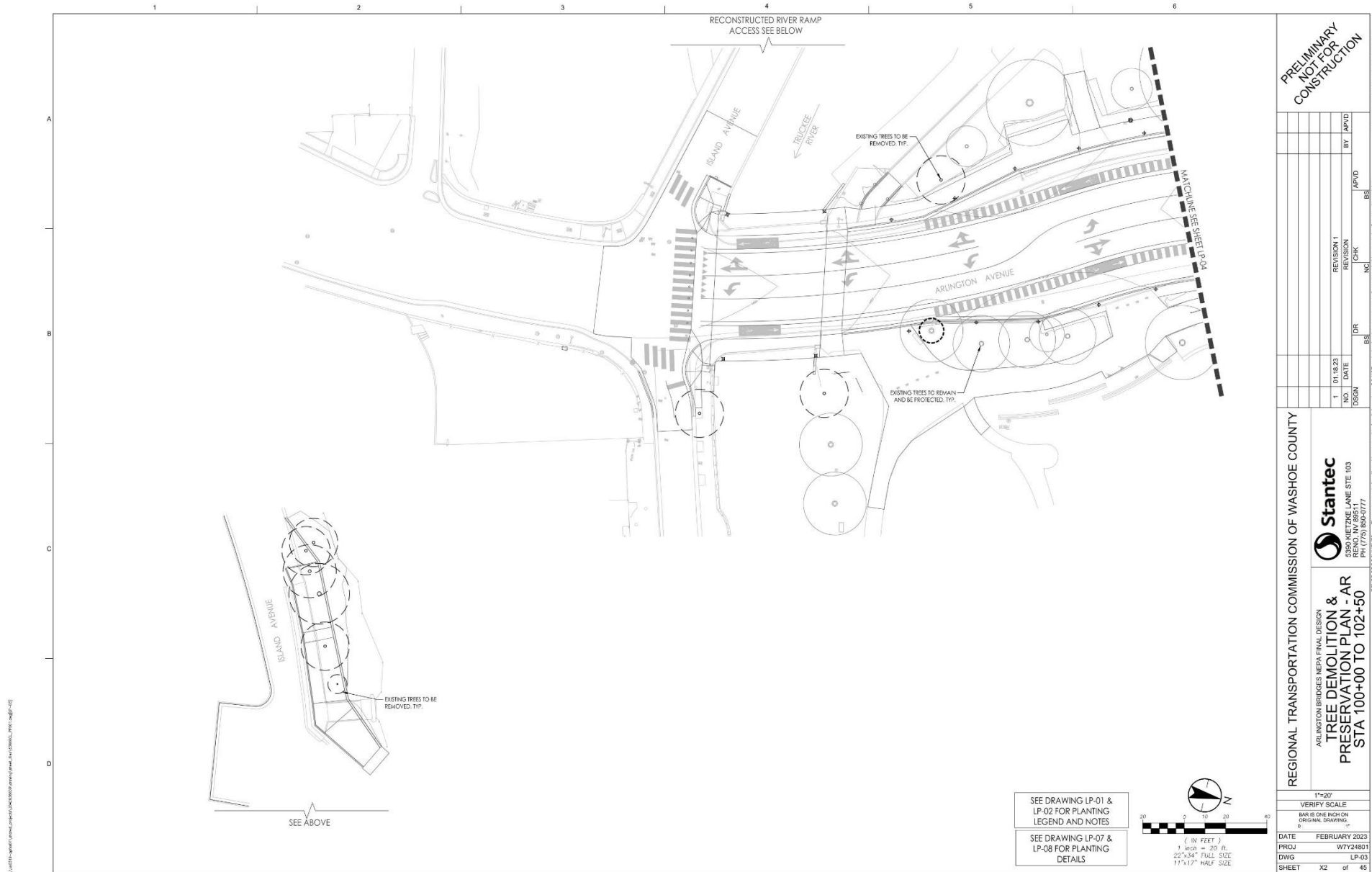
Custom Column Light

Stainless and Galvanized Steel

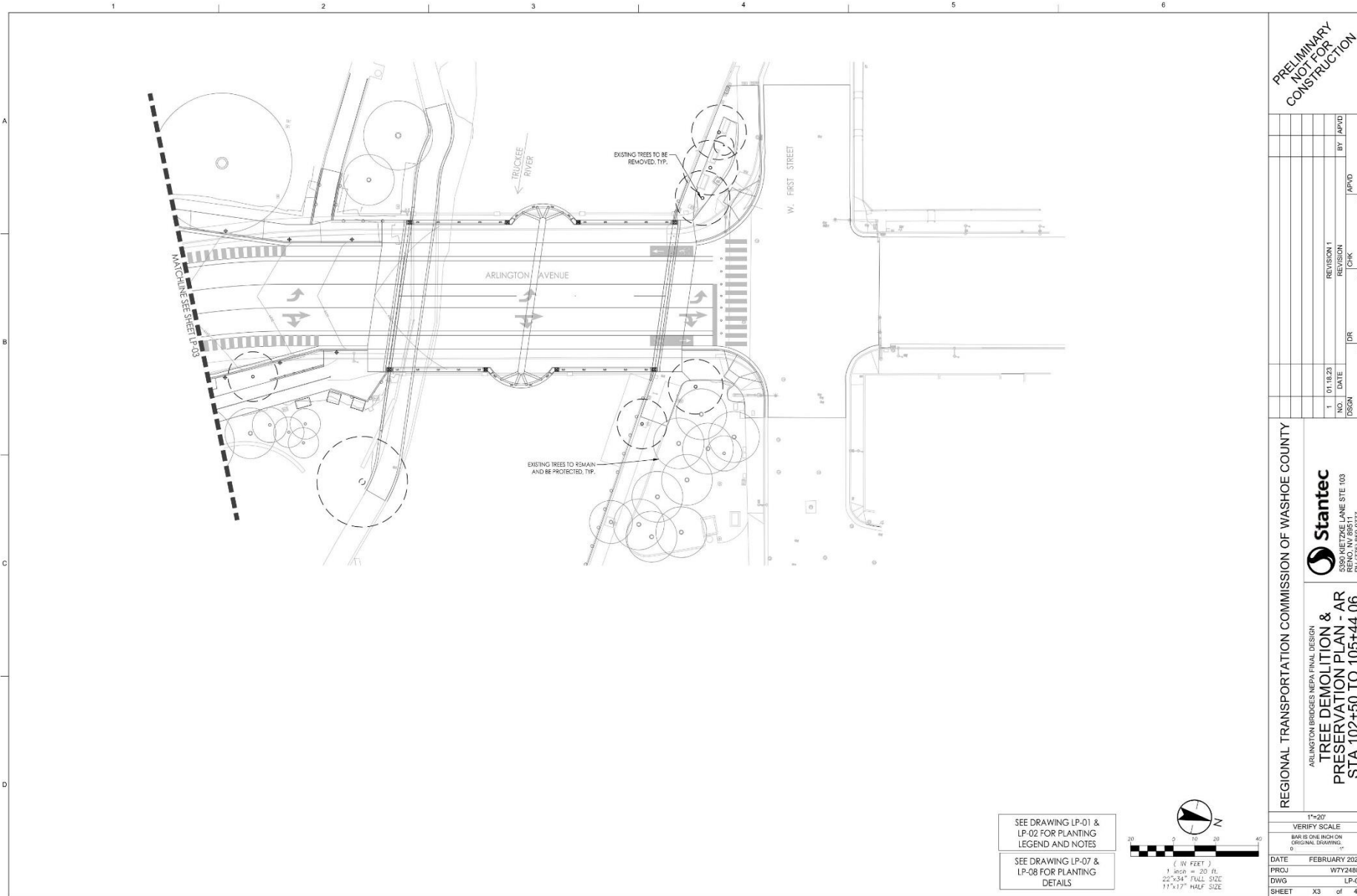
Accents of Bronze



Tree Removals

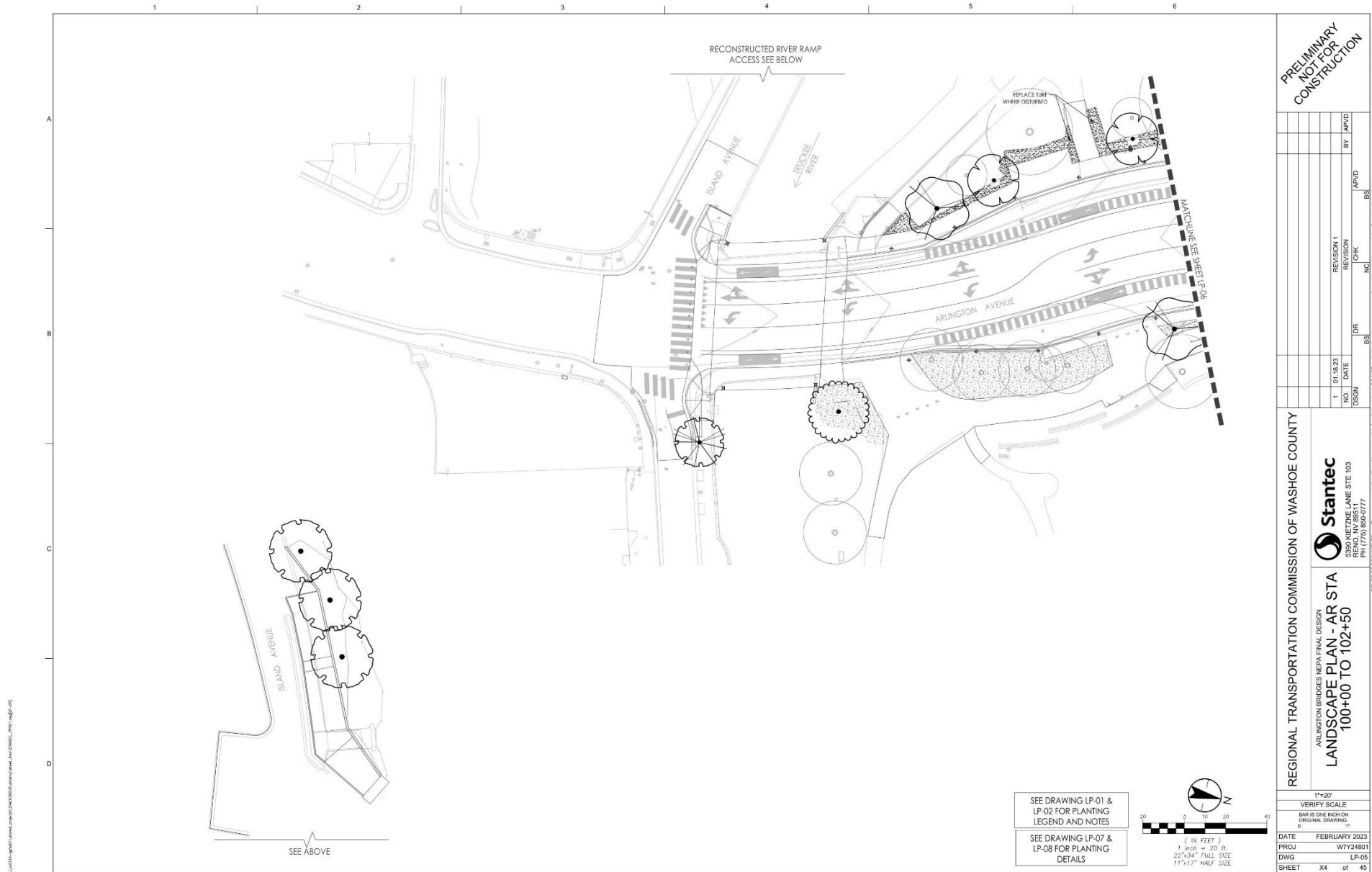


Tree Removals

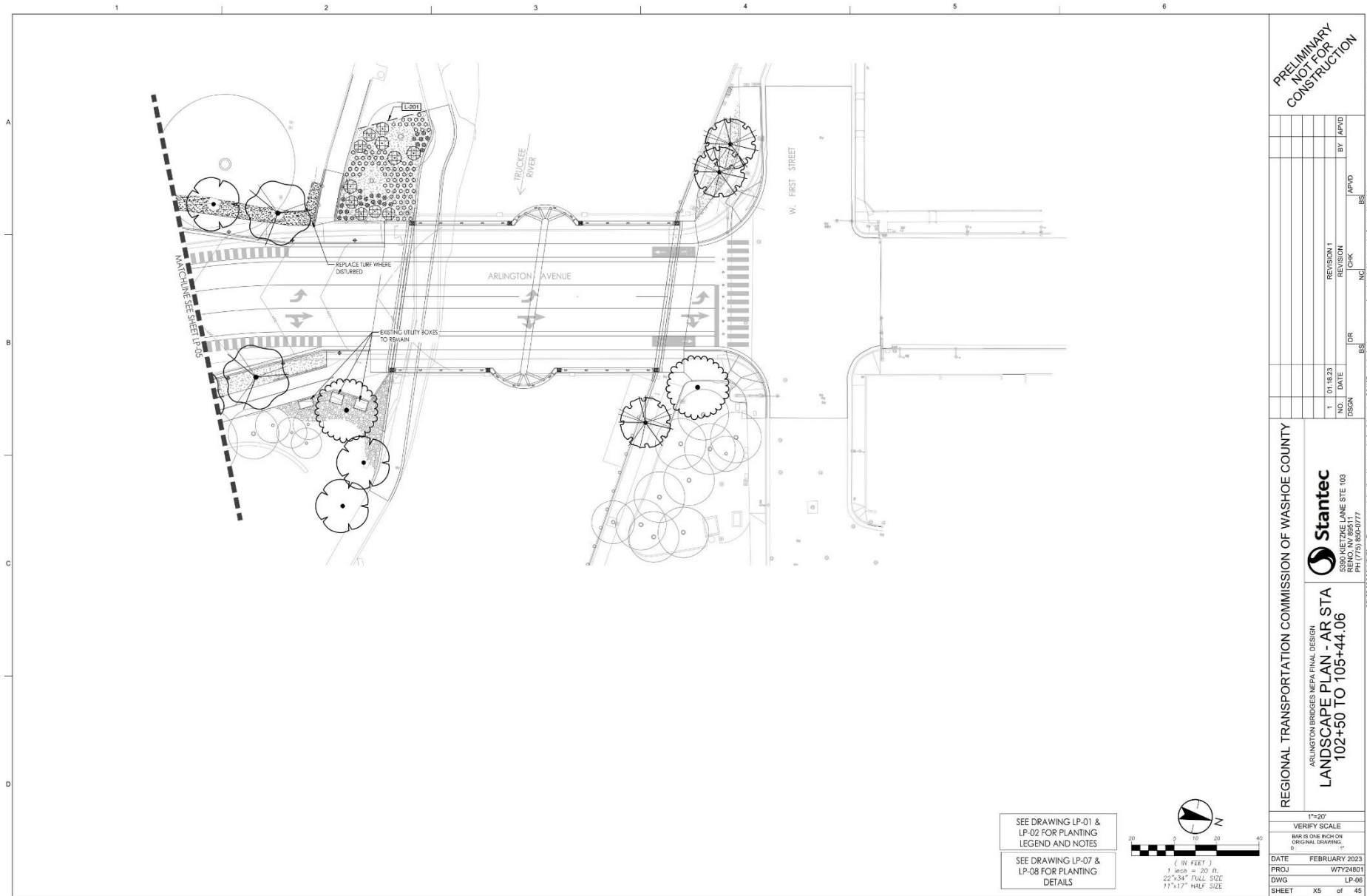


\\s010101\project\10544\10544-0000\10544-0000\10544-0000.dwg

New Landscaping



New Landscaping



SEE DRAWING LP-01 & LP-02 FOR PLANTING LEGEND AND NOTES

SEE DRAWING LP-07 & LP-08 FOR PLANTING DETAILS

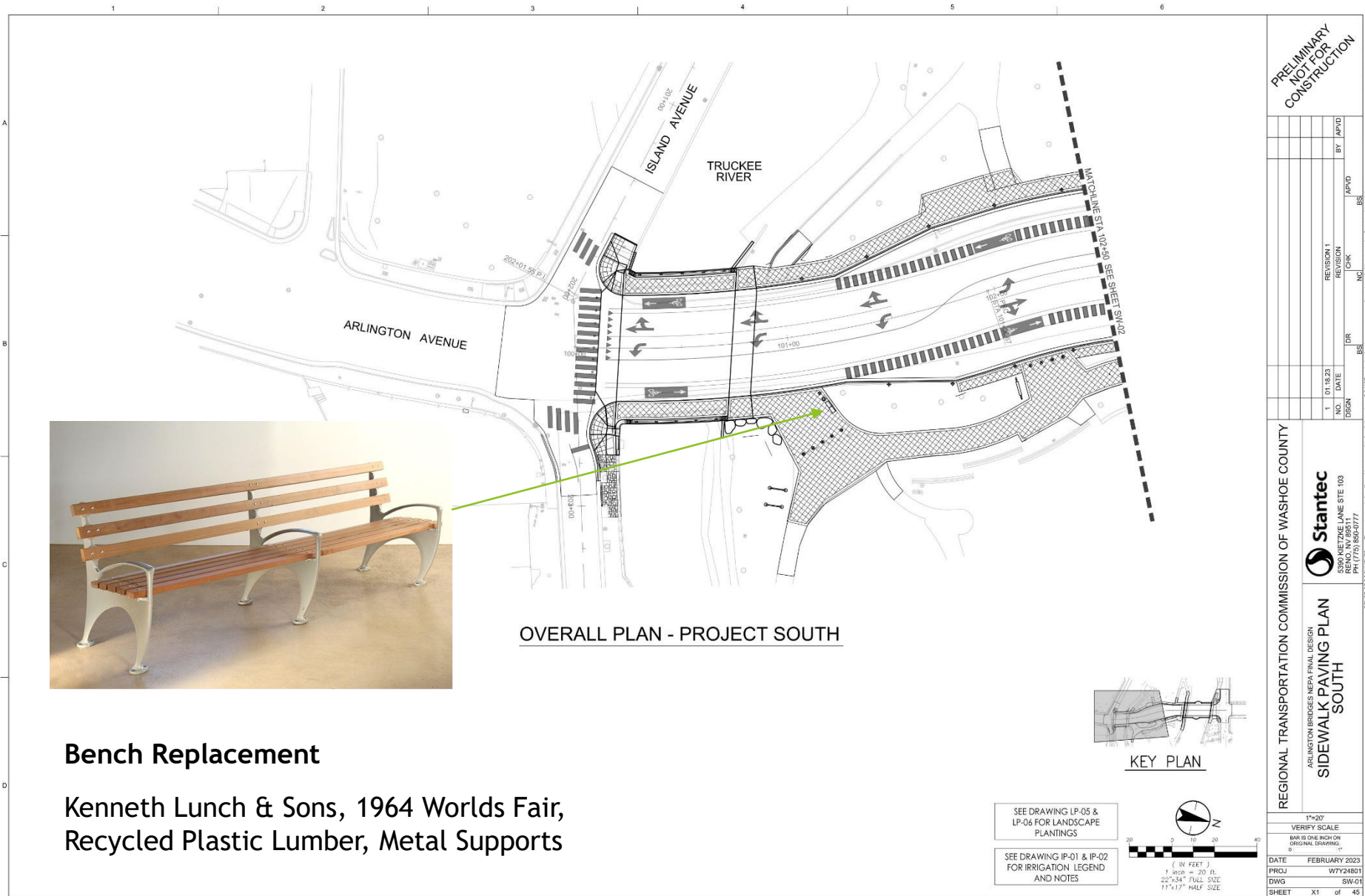


REGIONAL TRANSPORTATION COMMISSION OF WASHOE COUNTY		 Stantec 2000 W. WASHINGTON AVENUE, SUITE 100 RENO, NV 89511 PH: (775) 860-0777		PRELIMINARY NOT FOR CONSTRUCTION	
ARLINGTON BRIDGES NEPA FINAL DESIGN LANDSCAPE PLAN - AR STA 102+50 TO 105+44.06		NO. 1 DSSGN	DATE 01.18.23	CHECK NC	BY APVD BS
REGIONAL TRANSPORTATION COMMISSION OF WASHOE COUNTY ARLINGTON BRIDGES NEPA FINAL DESIGN LANDSCAPE PLAN - AR STA 102+50 TO 105+44.06		DATE FEBRUARY 2023	PREP WY24001	DWG LP-06	SHEET X5 of 45

REUSE OF DOCUMENTS: The copyright for this drawing and the information for all drawings is owned by Stantec. No part of this drawing may be reproduced, stored in a retrieval system, or transmitted, in any form or by any means, without the prior written permission of Stantec. All rights reserved.

\\s010101\project\10254_Compact\10254_0000\Drawings\LP-06.dwg, 10/11/2023, 10:00 AM, 10254.dwg, 10254.dwg

Sidewalks

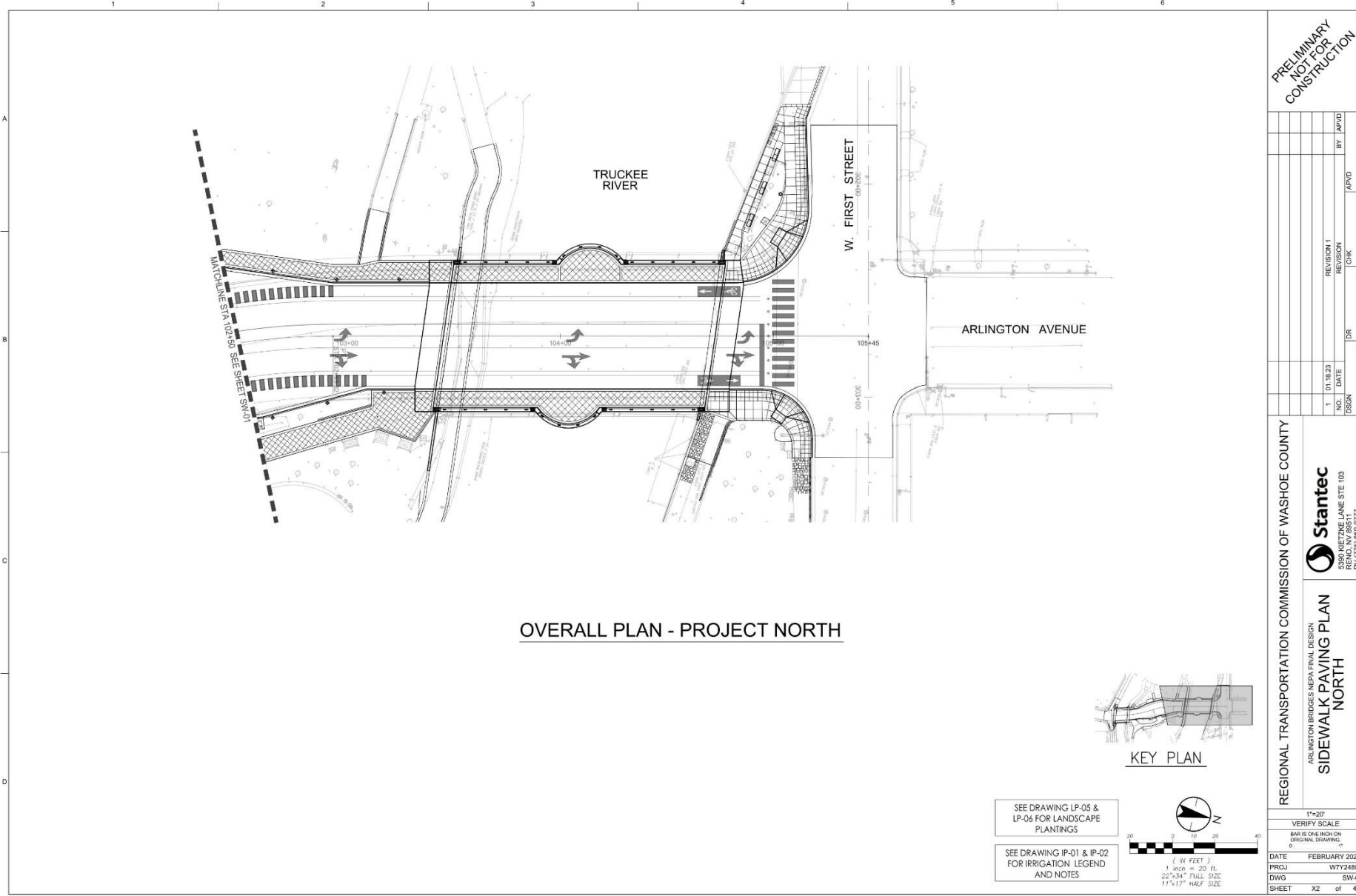


Bench Replacement

Kenneth Lunch & Sons, 1964 Worlds Fair,
Recycled Plastic Lumber, Metal Supports

V:\2023\stg\1221\stg\1221_02\1221_02.dwg (1221_02.dwg)

Sidewalks



PRELIMINARY
NOT FOR
CONSTRUCTION

NO.	DATE	DR	CHK	APVD	BY
1	01.18.23	BS	NC	BS	

REVISION 1

Stantec
CONSULTING ENGINEERS
RENO, NV 89511
PH (775) 850-0777

REGIONAL TRANSPORTATION COMMISSION OF WASHOE COUNTY
ARLINGTON BRIDGES NEPA FINAL DESIGN
**SIDEWALK PAVING PLAN
NORTH**

1"=20'
VERIFY SCALE
BAR IS ONE INCH ON ORIGINAL DRAWING.

DATE	FEBRUARY 2023
PREP	WY 24801
DWG	SW-02
SHEET	X2 of 45

(STANTEC) 2023. ALL RIGHTS RESERVED.

REUSE OF DOCUMENTS: The copyright for this drawing is owned and held in trust for the Commission for all purposes including reproduction, distribution, sale, or otherwise. The copyright for this drawing is not intended to be used for any other project, for any other jurisdiction, or for any other purpose without the written consent of Stantec, Inc. © 2023 Stantec, Inc.

\\s01021\project\104-45\042523\042523.dwg (Printed on: 2/1/2023 10:45:42 AM)

Lighting



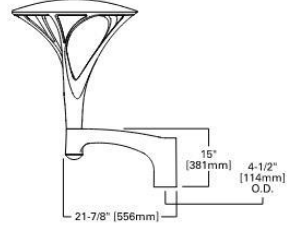
Calculation Summary

Label	CalcType	Units	Avg	Max	Min	Avg/Min	Max/Min
East sidewalk	Illuminance	Fc	1.10	2.60	0.09	12.22	28.89
Roadway	Illuminance	Fc	1.13	3.14	0.38	2.97	8.26
West sidewalk	Illuminance	Fc	1.55	2.62	0.75	2.07	3.43
Island	Illuminance	Fc	1.21	3.1	0.4	3.03	7.75
North bridge	Illuminance	Fc	1.09	2.4	0.5	2.18	4.80
South bridge	Illuminance	Fc	0.99	1.8	0.4	1.98	4.50

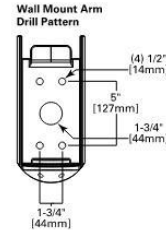
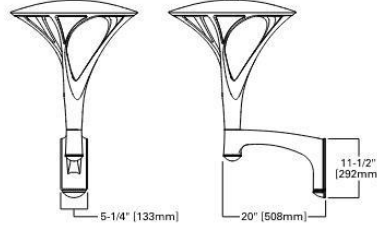
Lighting

MOUNTING CONFIGURATIONS (WEIGHT AND EPAS INCLUDES FIXTURE)

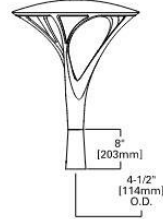
Single Arm Mount (ARSA-XX)
Weight: 56 lbs. [25.45 kgs.]
EPA: 1.7 Sq. Ft.



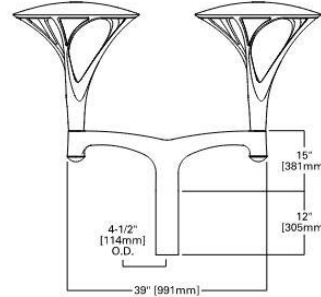
Wall Mount Arm (ARWM-XX)
Weight: 57 lbs. [25.91 kgs.]
EPA: 1.8 Sq. Ft.



Post Top Adapter (ARPA4-XX)
Weight: 41 lbs. [18.63 kgs.]
EPA: 1.2 Sq. Ft.



Twin Arm Mount (ARTA15-XX)
Weight: 114 lbs. [51.81 kgs.]
EPA: 3.45 Sq. Ft.

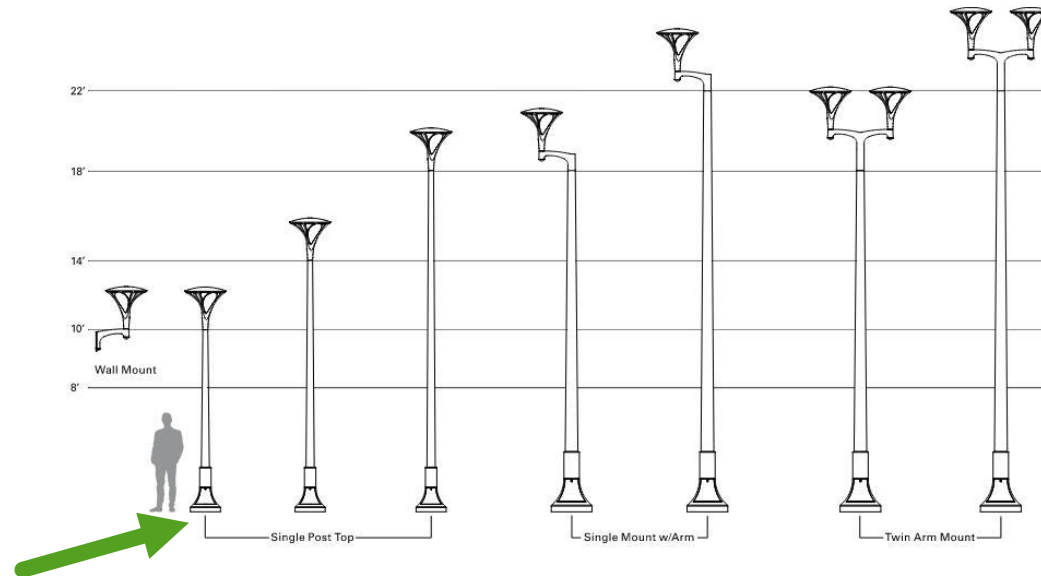


MOUNTING REQUIREMENTS CHART

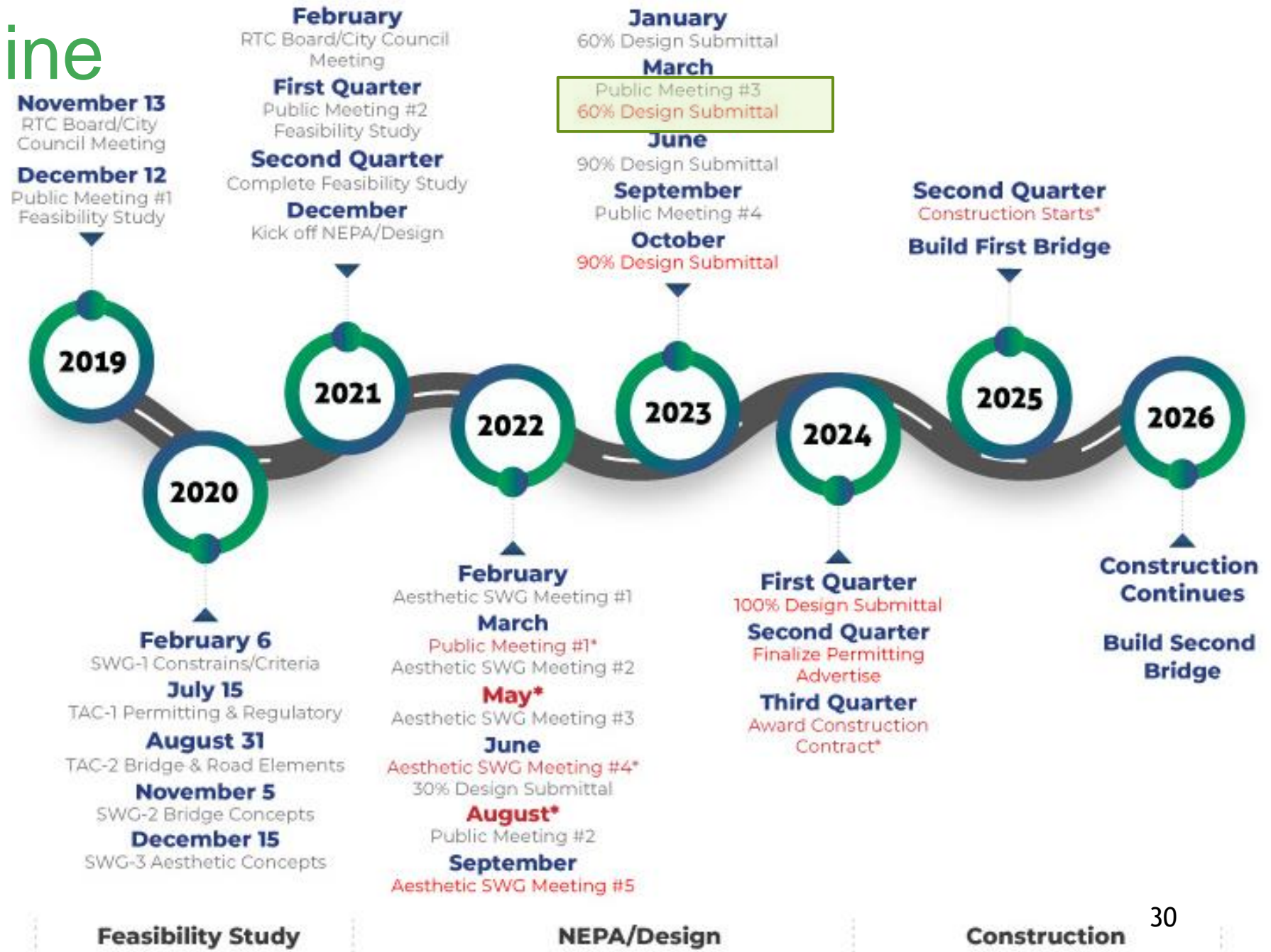
Tenon O.D. (Inches)	2-3/8" Tenon		
	3"	4"	5"
Pole Top O.D. (Inches)	Standard	Standard	Standard
Post Top	Standard	Spacer (Provided) & ARPA4-XX (Order Separately)	Spacer (Provided) & ARPA4-XX (Order Separately)
Single Arm Mount	Spacer (Provided)	Spacer (Provided)	Spacer (Provided)

Tenon O.D. (Inches)	3" Tenon	
	4"	5"
Pole Top O.D. (Inches)	Standard	Standard
Post Top	ARPA4-XX (Order Separately)	ARPA4-XX (Order Separately)
Single Arm Mount	Standard	Standard
Twin Mount	Standard	Standard

POLE CONFIGURATIONS (ARP DECORATIVE POLE SHOWN)



Project Timeline



* Schedule changes highlighted in red

Next Meetings, Action Items, and Submissions

- 60% Design Submittal - March 2023
- Public Meeting #3- March 2023

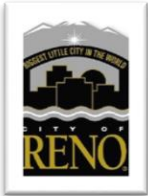


Thank You for Participating!



Barb.Santner@stantec.com

Jtortelli@rtcwashoe.com



*Building A Better Community
Through Quality Transportation.*
rtcwashoe.com



Jacobs



PK Electrical, Inc.

